



SCI ENGINEERING, INC.

EARTH • SCIENCE • SOLUTIONS

GEOTECHNICAL
ENVIRONMENTAL
NATURAL RESOURCES
CULTURAL RESOURCES
CONSTRUCTION SERVICES

April 2, 2024

Michael Gegg
Mehlville School District
3120 Lemay Ferry Road
St. Louis, Missouri 63125

RE: Lead in Drinking Water Report
St. Johns/MOSAIC Elementary School
3701 Will Avenue
St. Louis, Missouri
SCI No. 2016-0860.2T

Dear Michael Gegg:

INTRODUCTION

SCI Engineering, Inc. (SCI) is pleased to submit this report summarizing lead in drinking water sampling activities performed on December 22, 2023. The purpose of the sampling activities was to screen for elevated levels of lead in the drinking water at potable water sources throughout the above-referenced structure.

The drinking water survey is intended to satisfy the requirements for the “Get the Lead Out of School Drinking Water Act” (GTLOSDWA), Section 160.077 administered by the Missouri Department of Health and Senior Services. Potable water sources to be tested were identified by the school district prior to SCI’s field activities.

LIMITATIONS

SCI’s sampling activities were limited to locations identified by the school district. If any additional potable water sources need testing, please contact SCI, and we will make arrangements for sampling these fixtures. Potable water sources that were not sampled will need a sign placed near each fixture informing students and faculty it is not to be used as a drinking water source.

During the course of performing the drinking water sampling of the structure, SCI was unable to sample four fixtures because they were out of order. These fixtures included the water fountains in Rooms 301, 302, 304, and 305. If these fixtures are made operational, they should be sampled or labeled non-potable. SCI was able to sample all other locations identified by the school district.

DRINKING WATER SURVEY

SCI collected “first draw” samples which consisted of collecting a water sample from each fixture or sample location after it remained stagnant for at least eight hours. Prior to sampling, SCI first mobilized to the site to flush the identified potable water fixtures throughout the structure. Once each fixture was

flushed, a sign was placed on the fixture indicating it should not be used. SCI then revisited the site, after a minimum of eight hours, to collect water samples from the fixtures.

SCI collected 28 drinking water samples (SJ-1 through SJ-28) from various water fixtures located throughout the structure and submitted them for analytical testing. The drinking water samples were analyzed for total lead by U.S. EPA Method 200.8. SCI collected a minimum of 250 milliliters of water from each location. Sampled water was containerized in laboratory-provided sample containers and shipped to the lab using standard chain-of-custody procedures. Figures depicting the locations of the sampled water fixtures are enclosed.

The drinking water samples were analyzed for lead in accordance with the GTLOSDWA, Section 160.077, which establishes an action level (AL) of 5 parts per billion (ppb). The drinking water samples which exceeded the AL are identified in Table 1, below. A copy of the analytical test results and chain-of-custody for all samples is enclosed.

Table 1 – Lead in Drinking Water Results

Sample Number	Sample Location	Sample Description	Result (ppb)
SJ-4	First Floor Room 108	Sink	8.9
SJ-5	First Floor Room 109	Sink	6.9
SJ-20	Room 215	Sink	8.3
SJ-21	Room 217	Sink	8.7
SJ-22	Room 218	Left Sink	6.7
SJ-23	Room 218	Right Sink	7.9
SJ-24	Room 306	Sink	11.3
SJ-25	Room 304	Sink	21.0
SJ-26	Room 302	Sink	11.8
SJ-27	Room 301	Sink	14.9
SJ-28	Room 305	Sink	5.3

CONCLUSION AND RECOMMENDATIONS

As can be seen in Table 1, above, eleven drinking water samples exceeded the AL. SCI recommends any fixture which exceeds the AL be taken out of service until remediated and follow up testing indicates results less than the AL. Alternatively, if a water fixture is determined not to be a potable drinking water source, signage may be installed indicating the purpose and/or restrictions of the fixture.

According to GTLOSDWA, any water fixtures which exceed the AL shall be remediated prior to August 1, 2024, or the first day on which students will be present in the building, whichever is later. Any replacement fixture shall be lead free, as defined in 40 CFR 143.12.

REPORTING

Within seven business days after receiving this report, the school district shall contact parents and staff

via written notification which shall include the following:

- The test results and a summary that explains such results;
- A description of any remedial steps taken;
- A description of general health effects of lead contamination and community specific resources; and
- If there is not enough water to meet the drinking water needs of the students, teachers and staff, bottled water shall be provided.

Additionally, within two weeks of receiving this report, the results and any lead remediation plans must be made available on the school's website.

This report, and subsequent annual testing reports, must be submitted to the Missouri Department of Health and Senior Services, Healthy Drinking Water Unit, PO Box 570, Jefferson City, MO 65102-0570.

FUTURE TESTING

After the fixtures identified in Table 1, above, have been remediated, at least 25 percent of the remediated fixtures must be sampled annually until all remediated sources have been tested. However, SCI recommends all fixtures be tested once they have been remediated. Once all fixtures have been tested and are below the action level, the school shall test the potable drinking water fixtures once every five years.

SCI appreciates the opportunity to be of service to you on this project, and we look forward to working with you in the future. Please contact us if you have any questions or comments regarding the information provided.

Respectfully,

SCI ENGINEERING, INC.



Brian L. Lieb
Project Scientist

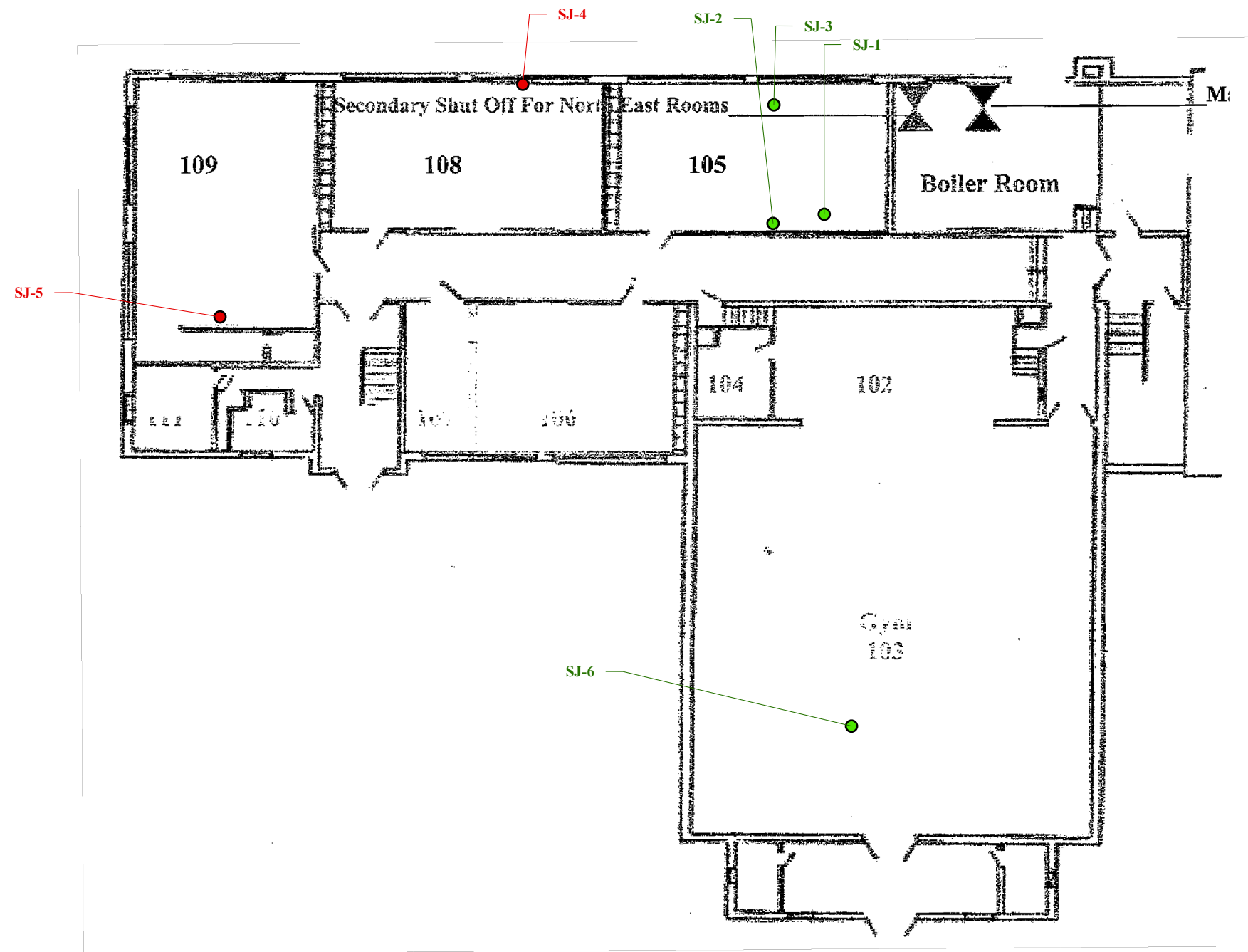


Jessica B. Keeven, CHMM
Senior Scientist

BLL/JBK/rah

Enclosure

Lead Drinking Water Sampling Plan
Lead Testing Results

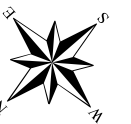


GENERAL NOTES/LEGEND

- RESULTS GREATER THAN THE ACTION LEVEL OF 5 PARTS PER BILLION
 - RESULTS LESS THAN THE ACTION LEVEL OF 5 PARTS PER BILLION
- FLOOR PLANS PROVIDED BY MEHLVILLE SCHOOL DISTRICT.
DIMENSIONS AND LOCATIONS ARE APPROXIMATE; ACTUAL MAY VARY. DRAWING SHALL NOT BE USED OUTSIDE THE CONTEXT OF THE REPORT FOR WHICH IT WAS GENERATED.

PROJECT NAME
MEHLVILLE SCHOOL DISTRICT
MOSAIC ELEMENTARY SCHOOL - 1ST FLOOR
ST. LOUIS, MISSOURI

LEAD DRINKING WATER SAMPLING PLAN



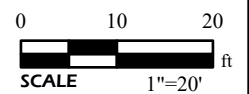
JOB NUMBER
2016-0860.2T

FIGURE DATE
03/07/2024

DRAWN BY
JTM

CHECKED BY
BLL

FIGURE
1

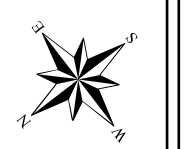




GENERAL NOTES/LEGEND
● RESULTS GREATER THAN THE ACTION LEVEL OF 5 PARTS PER BILLION
● RESULTS LESS THAN THE ACTION LEVEL OF 5 PARTS PER BILLION
FLOOR PLANS PROVIDED BY MEHLVILLE SCHOOL DISTRICT.
DIMENSIONS AND LOCATIONS ARE APPROXIMATE; ACTUAL MAY VARY. DRAWING SHALL NOT BE USED OUTSIDE THE CONTEXT OF THE REPORT FOR WHICH IT WAS GENERATED.

PROJECT NAME
MEHLVILLE SCHOOL DISTRICT
MOSAIC ELEMENTARY SCHOOL- 2ND FLOOR
ST. LOUIS, MISSOURI

LEAD DRINKING WATER SAMPLING PLAN



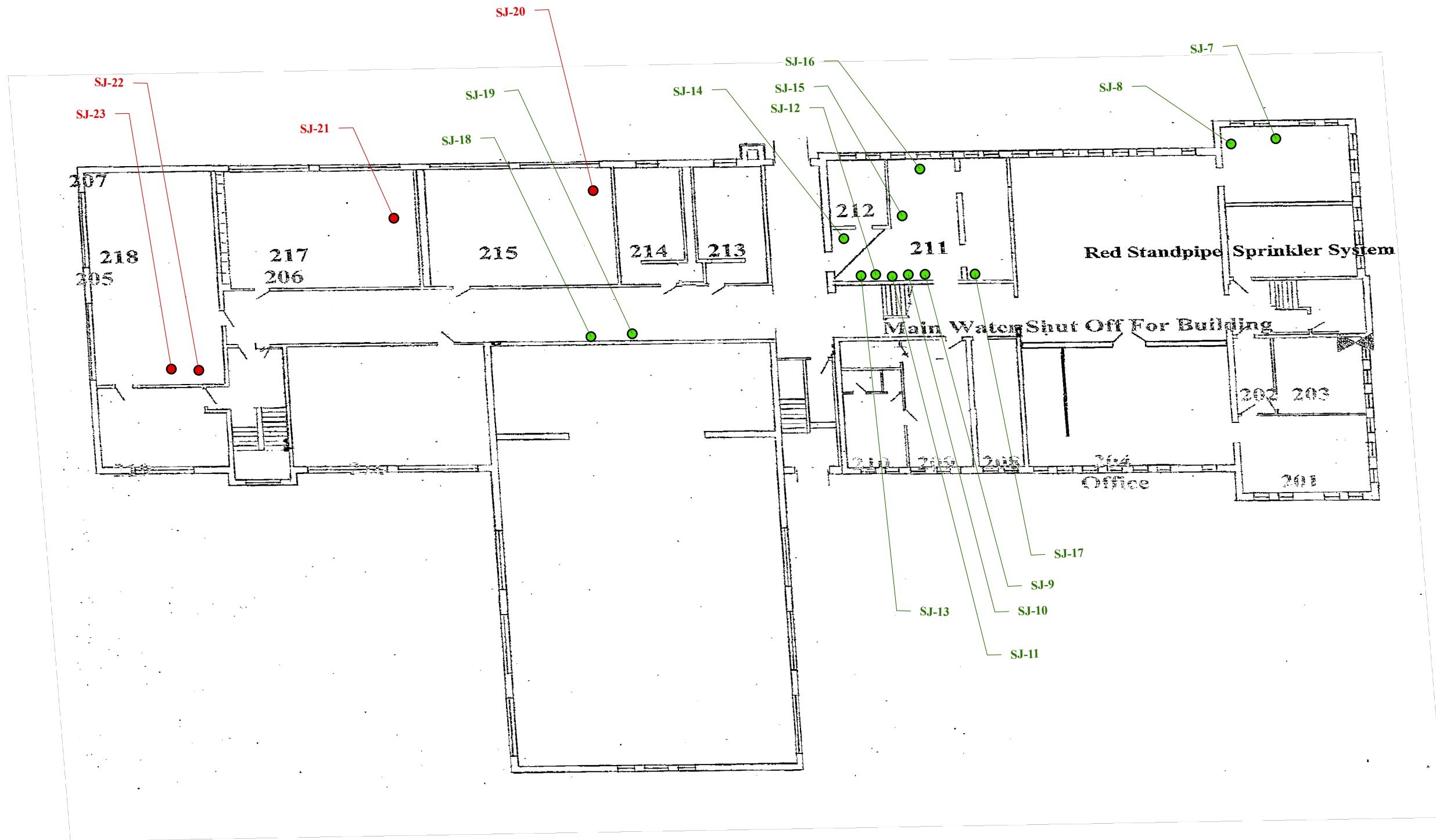
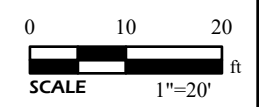
JOB NUMBER
2016-0860.2T

FIGURE DATE
03/07/2024

DRAWN BY
JTM

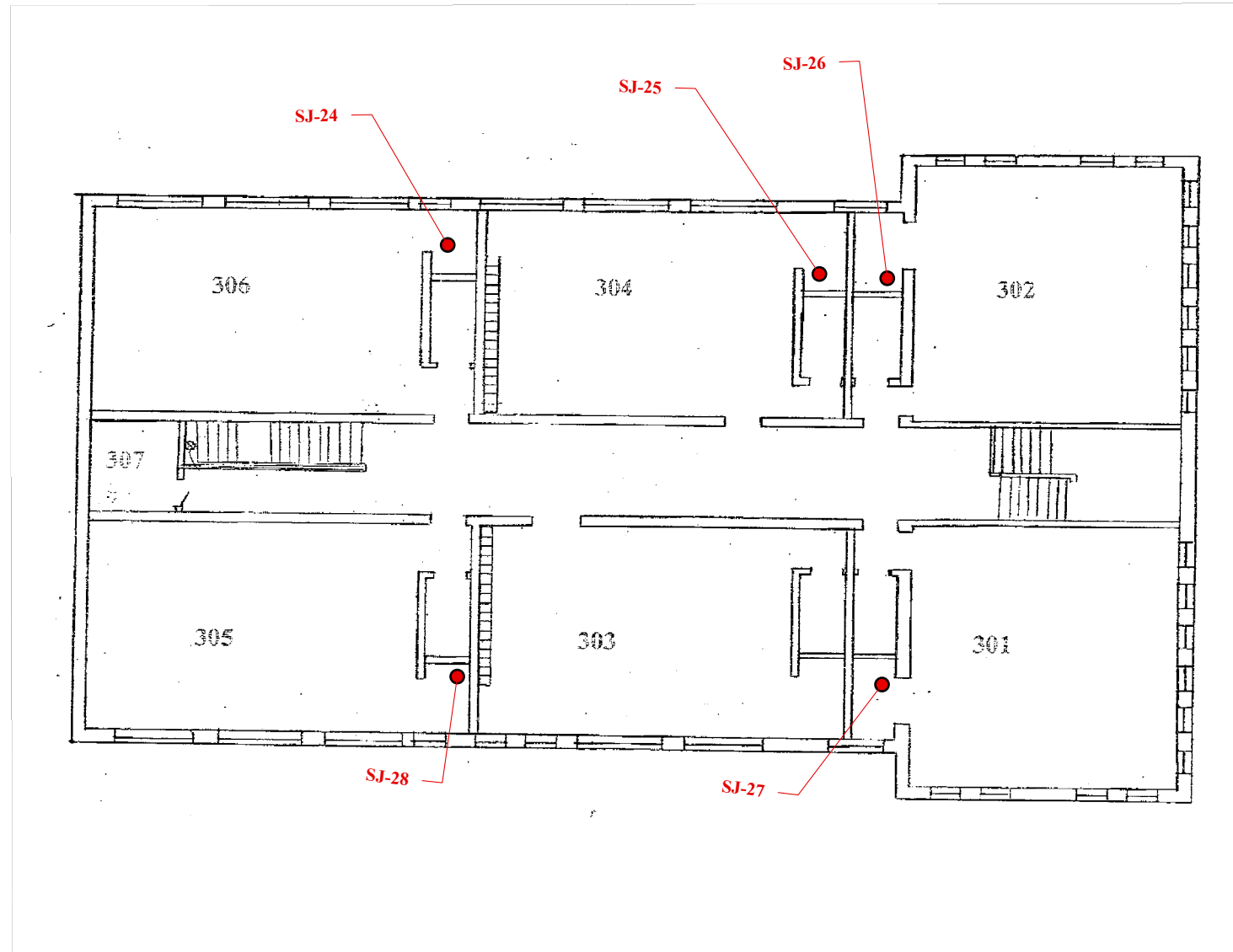
CHECKED BY
BLL

FIGURE
2

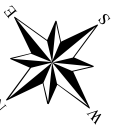




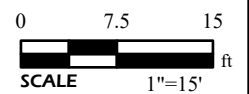
GENERAL NOTES/LEGEND
● RESULTS GREATER THAN THE ACTION LEVEL OF 5 PARTS PER BILLION
FLOOR PLANS PROVIDED BY MEHLVILLE SCHOOL DISTRICT. DIMENSIONS AND LOCATIONS ARE APPROXIMATE; ACTUAL MAY VARY. DRAWING SHALL NOT BE USED OUTSIDE THE CONTEXT OF THE REPORT FOR WHICH IT WAS GENERATED.



PROJECT NAME
MEHLVILLE SCHOOL DISTRICT
MOSAIC ELEMENTARY SCHOOL- 3RD FLOOR
ST. LOUIS, MISSOURI
LEAD DRINKING WATER SAMPLING PLAN



JOB NUMBER
2016-0860.2T
FIGURE DATE
03/07/2024
DRAWN BY
JTM
CHECKED BY
BLL
FIGURE
3





Pace Analytical Services, LLC

2231 W. Altorfer Drive

Peoria, IL 61615

(800)752-6651

January 29, 2024

Glenn Grissom
SCI Engineering
130 Point W. Blvd.
St. Chariles, MO 63301

RE: 2016-0860.2T - MOSAIC

Dear Glenn Grissom:

Please find enclosed the analytical results for the **28** sample(s) the laboratory received on **1/2/24 3:35 pm** and logged in under work order **HA00067**. All testing is performed according to our current TNI accreditations unless otherwise noted. This report cannot be reproduced, except in full, without the written permission of Pace Analytical Services, LLC.

If you have any questions regarding your report, please contact your project manager. Quality and timely data is of the utmost importance to us.

Pace Analytical Services appreciates the opportunity to provide you with analytical expertise. We are always trying to improve our customer service and we welcome you to contact the General Manager, Lisa Grant, with any feedback you have about your experience with our laboratory at 309-683-1764 or lisa.grant@pacelabs.com.

A handwritten signature in black ink, appearing to read "Chenise Lambert-Sykes".

Chenise Lambert-Sykes
Project Manager
(314)432-0550
Chenise.Lambert-Sykes@pacelabs.com



SAMPLE RECEIPT CHECK LIST

Items not applicable will be marked as in compliance

Work Order HA00067

YES	Samples received within temperature compliance when applicable
YES	COC present upon sample receipt
YES	COC completed & legible
YES	Sampler name & signature present
YES	Unique sample IDs assigned
YES	Sample collection location recorded
YES	Date & time collected recorded on COC
YES	Relinquished by client signature on COC
YES	COC & labels match
YES	Sample labels are legible
YES	Appropriate bottle(s) received
YES	Sufficient sample volume received
YES	Sample containers received undamaged
NO	Zero headspace, <6 mm present in VOA vials
NO	Trip blank(s) received
YES	All non-field analyses received within holding times
NO	Short hold time analysis
YES	Current PDC COC submitted
NO	Case narrative provided



Pace Analytical Services, LLC
2231 W. Altorfer Drive
Peoria, IL 61615
(800)752-6651

Case Narrative

The drinking water lead analysis was performed at Pace-Ormond Beach, FL. Please refer to the subcontract section of the report for details.



ANALYTICAL RESULTS

Sample: HA00067-01
Name: SJ - 1
Matrix: Drinking Water - Grab

Sampled: 12/22/23 21:42
Received: 01/02/24 15:35

Table with 10 columns: Parameter, Result, Unit, Qualifier, Prepared, Dilution, MRL, Analyzed, Analyst, Method

Subcontracted Analysis - Pace Analytical - Ormond Beach

Table row for Lead: < 1 ug/L, 12/22/23 21:42, 1, 1, PACE, EPA 200.8 REV 5.4

Sample: HA00067-02
Name: SJ - 2
Matrix: Drinking Water - Grab

Sampled: 12/22/23 21:43
Received: 01/02/24 15:35

Table with 10 columns: Parameter, Result, Unit, Qualifier, Prepared, Dilution, MRL, Analyzed, Analyst, Method

Subcontracted Analysis - Pace Analytical - Ormond Beach

Table row for Lead: < 1 ug/L, 12/22/23 21:43, 1, 1, PACE, EPA 200.8 REV 5.4

Sample: HA00067-03
Name: SJ - 3
Matrix: Drinking Water - Grab

Sampled: 12/22/23 21:44
Received: 01/02/24 15:35

Table with 10 columns: Parameter, Result, Unit, Qualifier, Prepared, Dilution, MRL, Analyzed, Analyst, Method

Subcontracted Analysis - Pace Analytical - Ormond Beach

Table row for Lead: 2.9 ug/L, 12/22/23 21:44, 1, 1, PACE, EPA 200.8 REV 5.4

Sample: HA00067-04
Name: SJ - 4
Matrix: Drinking Water - Grab

Sampled: 12/22/23 21:48
Received: 01/02/24 15:35

Table with 10 columns: Parameter, Result, Unit, Qualifier, Prepared, Dilution, MRL, Analyzed, Analyst, Method

Subcontracted Analysis - Pace Analytical - Ormond Beach

Table row for Lead: 8.9 ug/L, 12/22/23 21:48, 1, 1, PACE, EPA 200.8 REV 5.4



ANALYTICAL RESULTS

Sample: HA00067-05
Name: SJ - 5
Matrix: Drinking Water - Grab

Sampled: 12/22/23 21:50
Received: 01/02/24 15:35

Table with 10 columns: Parameter, Result, Unit, Qualifier, Prepared, Dilution, MRL, Analyzed, Analyst, Method

Subcontracted Analysis - Pace Analytical - Ormond Beach

Table row for Lead: Result 6.9, Unit ug/L, Prepared 12/22/23 21:50, Dilution 1, MRL 1, Analyst PACE, Method EPA 200.8 REV 5.4

Sample: HA00067-06
Name: SJ - 6
Matrix: Drinking Water - Grab

Sampled: 12/22/23 21:52
Received: 01/02/24 15:35

Table with 10 columns: Parameter, Result, Unit, Qualifier, Prepared, Dilution, MRL, Analyzed, Analyst, Method

Subcontracted Analysis - Pace Analytical - Ormond Beach

Table row for Lead: Result 2.1, Unit ug/L, Prepared 12/22/23 21:52, Dilution 1, MRL 1, Analyst PACE, Method EPA 200.8 REV 5.4

Sample: HA00067-07
Name: SJ - 7
Matrix: Drinking Water - Grab

Sampled: 12/22/23 21:57
Received: 01/02/24 15:35

Table with 10 columns: Parameter, Result, Unit, Qualifier, Prepared, Dilution, MRL, Analyzed, Analyst, Method

Subcontracted Analysis - Pace Analytical - Ormond Beach

Table row for Lead: Result < 1, Unit ug/L, Prepared 12/22/23 21:57, Dilution 1, MRL 1, Analyst PACE, Method EPA 200.8 REV 5.4

Sample: HA00067-08
Name: SJ - 8
Matrix: Drinking Water - Grab

Sampled: 12/22/23 21:58
Received: 01/02/24 15:35

Table with 10 columns: Parameter, Result, Unit, Qualifier, Prepared, Dilution, MRL, Analyzed, Analyst, Method

Subcontracted Analysis - Pace Analytical - Ormond Beach

Table row for Lead: Result < 1, Unit ug/L, Prepared 12/22/23 21:58, Dilution 1, MRL 1, Analyst PACE, Method EPA 200.8 REV 5.4



ANALYTICAL RESULTS

Sample: HA00067-09
Name: SJ - 9
Matrix: Drinking Water - Grab

Sampled: 12/22/23 22:00
Received: 01/02/24 15:35

Table with 10 columns: Parameter, Result, Unit, Qualifier, Prepared, Dilution, MRL, Analyzed, Analyst, Method

Subcontracted Analysis - Pace Analytical - Ormond Beach

Table row for Lead: < 1 ug/L, 12/22/23 22:00, 1, 1, PACE, EPA 200.8 REV 5.4

Sample: HA00067-10
Name: SJ - 10
Matrix: Drinking Water - Grab

Sampled: 12/22/23 22:02
Received: 01/02/24 15:35

Table with 10 columns: Parameter, Result, Unit, Qualifier, Prepared, Dilution, MRL, Analyzed, Analyst, Method

Subcontracted Analysis - Pace Analytical - Ormond Beach

Table row for Lead: < 1 ug/L, 12/22/23 22:02, 1, 1, PACE, EPA 200.8 REV 5.4

Sample: HA00067-11
Name: SJ - 11
Matrix: Drinking Water - Grab

Sampled: 12/22/23 22:04
Received: 01/02/24 15:35

Table with 10 columns: Parameter, Result, Unit, Qualifier, Prepared, Dilution, MRL, Analyzed, Analyst, Method

Subcontracted Analysis - Pace Analytical - Ormond Beach

Table row for Lead: 1.4 ug/L, 12/22/23 22:04, 1, 1, PACE, EPA 200.8 REV 5.4

Sample: HA00067-12
Name: SJ - 12
Matrix: Drinking Water - Grab

Sampled: 12/22/23 22:05
Received: 01/02/24 15:35

Table with 10 columns: Parameter, Result, Unit, Qualifier, Prepared, Dilution, MRL, Analyzed, Analyst, Method

Subcontracted Analysis - Pace Analytical - Ormond Beach

Table row for Lead: < 1 ug/L, 12/22/23 22:05, 1, 1, PACE, EPA 200.8 REV 5.4



ANALYTICAL RESULTS

Sample: HA00067-13
Name: SJ - 13
Matrix: Drinking Water - Grab

Sampled: 12/22/23 22:06

Received: 01/02/24 15:35

Table with 10 columns: Parameter, Result, Unit, Qualifier, Prepared, Dilution, MRL, Analyzed, Analyst, Method

Subcontracted Analysis - Pace Analytical - Ormond Beach

Table row for Lead: Result 1.7, Unit ug/L, Prepared 12/22/23 22:06, Dilution 1, MRL 1, Analyst PACE, Method EPA 200.8 REV 5.4

Sample: HA00067-14
Name: SJ - 14
Matrix: Drinking Water - Grab

Sampled: 12/22/23 22:07

Received: 01/02/24 15:35

Table with 10 columns: Parameter, Result, Unit, Qualifier, Prepared, Dilution, MRL, Analyzed, Analyst, Method

Subcontracted Analysis - Pace Analytical - Ormond Beach

Table row for Lead: Result < 1, Unit ug/L, Prepared 12/22/23 22:07, Dilution 1, MRL 1, Analyst PACE, Method EPA 200.8 REV 5.4

Sample: HA00067-15
Name: SJ - 15
Matrix: Drinking Water - Grab

Sampled: 12/22/23 22:08

Received: 01/02/24 15:35

Table with 10 columns: Parameter, Result, Unit, Qualifier, Prepared, Dilution, MRL, Analyzed, Analyst, Method

Subcontracted Analysis - Pace Analytical - Ormond Beach

Table row for Lead: Result < 1, Unit ug/L, Prepared 12/22/23 22:08, Dilution 1, MRL 1, Analyst PACE, Method EPA 200.8 REV 5.4

Sample: HA00067-16
Name: SJ - 16
Matrix: Drinking Water - Grab

Sampled: 12/22/23 22:11

Received: 01/02/24 15:35

Table with 10 columns: Parameter, Result, Unit, Qualifier, Prepared, Dilution, MRL, Analyzed, Analyst, Method

Subcontracted Analysis - Pace Analytical - Ormond Beach

Table row for Lead: Result < 1, Unit ug/L, Prepared 12/22/23 22:11, Dilution 1, MRL 1, Analyst PACE, Method EPA 200.8 REV 5.4



ANALYTICAL RESULTS

Sample: HA00067-17
Name: SJ - 17
Matrix: Drinking Water - Grab

Sampled: 12/22/23 22:12
Received: 01/02/24 15:35

Table with 10 columns: Parameter, Result, Unit, Qualifier, Prepared, Dilution, MRL, Analyzed, Analyst, Method

Subcontracted Analysis - Pace Analytical - Ormond Beach

Table row for Lead: < 1 ug/L, 12/22/23 22:12, 1, 1, PACE, EPA 200.8 REV 5.4

Sample: HA00067-18
Name: SJ - 18
Matrix: Drinking Water - Grab

Sampled: 12/22/23 22:14
Received: 01/02/24 15:35

Table with 10 columns: Parameter, Result, Unit, Qualifier, Prepared, Dilution, MRL, Analyzed, Analyst, Method

Subcontracted Analysis - Pace Analytical - Ormond Beach

Table row for Lead: < 1 ug/L, 12/22/23 22:14, 1, 1, PACE, EPA 200.8 REV 5.4

Sample: HA00067-19
Name: SJ - 19
Matrix: Drinking Water - Grab

Sampled: 12/22/23 22:14
Received: 01/02/24 15:35

Table with 10 columns: Parameter, Result, Unit, Qualifier, Prepared, Dilution, MRL, Analyzed, Analyst, Method

Subcontracted Analysis - Pace Analytical - Ormond Beach

Table row for Lead: < 1 ug/L, 12/22/23 22:14, 1, 1, PACE, EPA 200.8 REV 5.4

Sample: HA00067-20
Name: SJ - 20
Matrix: Drinking Water - Grab

Sampled: 12/22/23 22:15
Received: 01/02/24 15:35

Table with 10 columns: Parameter, Result, Unit, Qualifier, Prepared, Dilution, MRL, Analyzed, Analyst, Method

Subcontracted Analysis - Pace Analytical - Ormond Beach

Table row for Lead: 8.3 ug/L, 12/22/23 22:15, 1, 1, PACE, EPA 200.8 REV 5.4



ANALYTICAL RESULTS

Sample: HA00067-21
Name: SJ - 21
Matrix: Drinking Water - Grab

Sampled: 12/22/23 22:18
Received: 01/02/24 15:35

Table with 10 columns: Parameter, Result, Unit, Qualifier, Prepared, Dilution, MRL, Analyzed, Analyst, Method

Subcontracted Analysis - Pace Analytical - Ormond Beach

Table row for Lead: 8.7 ug/L, 12/22/23 22:18, 1, 1, PACE, EPA 200.8 REV 5.4

Sample: HA00067-22
Name: SJ - 22
Matrix: Drinking Water - Grab

Sampled: 12/22/23 22:20
Received: 01/02/24 15:35

Table with 10 columns: Parameter, Result, Unit, Qualifier, Prepared, Dilution, MRL, Analyzed, Analyst, Method

Subcontracted Analysis - Pace Analytical - Ormond Beach

Table row for Lead: 6.7 ug/L, 12/22/23 22:20, 1, 1, PACE, EPA 200.8 REV 5.4

Sample: HA00067-23
Name: SJ - 23
Matrix: Drinking Water - Grab

Sampled: 12/22/23 22:20
Received: 01/02/24 15:35

Table with 10 columns: Parameter, Result, Unit, Qualifier, Prepared, Dilution, MRL, Analyzed, Analyst, Method

Subcontracted Analysis - Pace Analytical - Ormond Beach

Table row for Lead: 7.9 ug/L, 12/22/23 22:20, 1, 1, PACE, EPA 200.8 REV 5.4

Sample: HA00067-24
Name: SJ - 24
Matrix: Drinking Water - Grab

Sampled: 12/22/23 22:24
Received: 01/02/24 15:35

Table with 10 columns: Parameter, Result, Unit, Qualifier, Prepared, Dilution, MRL, Analyzed, Analyst, Method

Subcontracted Analysis - Pace Analytical - Ormond Beach

Table row for Lead: 11.3 ug/L, 12/22/23 22:24, 1, 1, PACE, EPA 200.8 REV 5.4



ANALYTICAL RESULTS

Sample: HA00067-25
Name: SJ - 25
Matrix: Drinking Water - Grab

Sampled: 12/22/23 22:26

Received: 01/02/24 15:35

Table with 10 columns: Parameter, Result, Unit, Qualifier, Prepared, Dilution, MRL, Analyzed, Analyst, Method

Subcontracted Analysis - Pace Analytical - Ormond Beach

Table with 10 columns: Parameter, Result, Unit, Qualifier, Prepared, Dilution, MRL, Analyzed, Analyst, Method

Sample: HA00067-26
Name: SJ - 26
Matrix: Drinking Water - Grab

Sampled: 12/22/23 22:27

Received: 01/02/24 15:35

Table with 10 columns: Parameter, Result, Unit, Qualifier, Prepared, Dilution, MRL, Analyzed, Analyst, Method

Subcontracted Analysis - Pace Analytical - Ormond Beach

Table with 10 columns: Parameter, Result, Unit, Qualifier, Prepared, Dilution, MRL, Analyzed, Analyst, Method

Sample: HA00067-27
Name: SJ - 27
Matrix: Drinking Water - Grab

Sampled: 12/22/23 22:29

Received: 01/02/24 15:35

Table with 10 columns: Parameter, Result, Unit, Qualifier, Prepared, Dilution, MRL, Analyzed, Analyst, Method

Subcontracted Analysis - Pace Analytical - Ormond Beach

Table with 10 columns: Parameter, Result, Unit, Qualifier, Prepared, Dilution, MRL, Analyzed, Analyst, Method

Sample: HA00067-28
Name: SJ - 28
Matrix: Drinking Water - Grab

Sampled: 12/22/23 22:30

Received: 01/02/24 15:35

Table with 10 columns: Parameter, Result, Unit, Qualifier, Prepared, Dilution, MRL, Analyzed, Analyst, Method

Subcontracted Analysis - Pace Analytical - Ormond Beach

Table with 10 columns: Parameter, Result, Unit, Qualifier, Prepared, Dilution, MRL, Analyzed, Analyst, Method



QC SAMPLE RESULTS

Parameter	Result	Unit	Qual	Spike Level	Source Result	%REC	%REC Limits	RPD	RPD Limit
<u>Batch [none] - DW 200.8 no prep - EPA 200.8 REV 5.4</u>									
BLK (BATCH-BLK1 (Water))				Prepared & Analyzed:					
Lead	< 0.2	ug/L					0-0		0
BS (BATCH-BS1 (Water))				Prepared & Analyzed:					
Lead	< 0.2	ug/L					85-115		20
MS (BATCH-MS1 (Water))				Prepared & Analyzed:					
Lead	< 0.2	ug/L					70-130		20
MSD (BATCH-MSD1 (Water))				Prepared & Analyzed:					
Lead	< 0.2	ug/L					70-130		20



NOTES

Specifications regarding method revisions, method modifications, and calculations used for analysis are available upon request. Please contact your project manager.

* Not a TNI accredited analyte

Certifications

CHI - McHenry, IL - 4314-A W. Crystal Lake Road, McHenry, IL 60050

TNI Accreditation for Drinking Water and Wastewater Fields of Testing through IL EPA Accreditation No. 100279

Illinois Department of Public Health Bacterial Analysis in Drinking Water Approved Laboratory Registry No. 17556

PIA - Peoria, IL - 2231 W. Altorfer Drive, Peoria, IL 61615

TNI Accreditation for Drinking Water, Wastewater, Solid and Hazardous Material Fields of Testing through IL EPA Accreditation No. 100230

Illinois Department of Public Health Bacterial Analysis in Drinking Water Approved Laboratory Registry No. 17553

Drinking Water Certifications/Accreditations: Iowa (240); Kansas (E-10338); Missouri (870)

Wastewater Certifications/Accreditations: Arkansas (88-0677); Iowa (240); Kansas (E-10338)

Solid and Hazardous Material Certifications/Accreditations: Arkansas (88-0677); Iowa (240); Kansas (E-10338)

SPMO - Springfield, MO - 1805 W Sunset Street, Springfield, MO 65807

USEPA DMR-QA Program

STL - Hazelwood, MO - 944 Anglum Rd, Hazelwood, MO 63042

TNI Accreditation for Wastewater, Solid and Hazardous Material Fields of Testing through KS KDHE Certification No. E-10389

TNI Accreditation for Wastewater, Solid and Hazardous Material Fields of Testing through IL EPA Accreditation No. - 200080

Illinois Department of Public Health Bacterial Analysis in Drinking Water Approved Laboratory, Registry No. 171050

Missouri Department of Natural Resources - Certificate of Approval for Microbiological Laboratory Service - No. 1050



Certified by: Chenise Lambert-Sykes, Project Manager



January 08, 2024

Chenise Lambert-Sykes
Pace Analytical Services, Inc - IL/MO
944 Anglum Road
Hazelwood, MO 63042

RE: Project: HA00067
Pace Project No.: 35851644

Dear Chenise Lambert-Sykes:

Enclosed are the analytical results for sample(s) received by the laboratory on January 04, 2024. The results relate only to the samples included in this report. Results reported herein conform to the applicable TNI/NELAC Standards and the laboratory's Quality Manual, where applicable, unless otherwise noted in the body of the report.

The test results provided in this final report were generated by each of the following laboratories within the Pace Network:

- Pace Analytical Services - Ormond Beach

If you have any questions concerning this report, please feel free to contact me.

Sincerely,

Brad Smith
brad.smith@pacelabs.com
(386) 672-5668
Project Manager

Enclosures



REPORT OF LABORATORY ANALYSIS

This report shall not be reproduced, except in full,
without the written consent of Pace Analytical Services, LLC.



CERTIFICATIONS

Project: HA00067

Pace Project No.: 35851644

Pace Analytical Services Ormond Beach

8 East Tower Circle, Ormond Beach, FL 32174

Alaska DEC- CS/UST/LUST

Alabama Certification #: 41320

California Certification# 3096

Colorado Certification: FL NELAC Reciprocity

Connecticut Certification #: PH-0216

Delaware Certification: FL NELAC Reciprocity

DoD-ANAB #:ADE-3199

Florida Certification #: E83079

Georgia Certification #: 955

Guam Certification: FL NELAC Reciprocity

Hawaii Certification: FL NELAC Reciprocity

Illinois Certification #: 200068

Indiana Certification: FL NELAC Reciprocity

Kansas Certification #: E-10383

Kentucky Certification #: 90050

Louisiana Certification #: FL NELAC Reciprocity

Louisiana Environmental Certificate #: 05007

Maine Certification #: FL01264

Maryland Certification: #346

Massachusetts Certification #: M-FL1264

Michigan Certification #: 9911

Mississippi Certification: FL NELAC Reciprocity

Missouri Certification #: 236

Montana Certification #: Cert 0074

Nebraska Certification: NE-OS-28-14

New Hampshire Certification #: 2958

New Jersey Certification #: FL022

New York Certification #: 11608

North Carolina Environmental Certificate #: 667

North Carolina Certification #: 12710

North Dakota Certification #: R-216

Ohio DEP 87780

Oklahoma Certification #: D9947

Pennsylvania Certification #: 68-00547

Puerto Rico Certification #: FL01264

South Carolina Certification: #96042001

Tennessee Certification #: TN02974

Texas Certification: FL NELAC Reciprocity

US Virgin Islands Certification: FL NELAC Reciprocity

Virginia Environmental Certification #: 460165

West Virginia Certification #: 9962C

Wisconsin Certification #: 399079670

Wyoming (EPA Region 8): FL NELAC Reciprocity

REPORT OF LABORATORY ANALYSIS

This report shall not be reproduced, except in full,
without the written consent of Pace Analytical Services, LLC.



SAMPLE ANALYTE COUNT

Project: HA00067

Pace Project No.: 35851644

Lab ID	Sample ID	Method	Analysts	Analytes Reported	Laboratory
35851644001	HA00067-01	EPA 200.8	BSL	1	PASI-O
35851644002	HA00067-02	EPA 200.8	BSL	1	PASI-O
35851644003	HA00067-03	EPA 200.8	BSL	1	PASI-O
35851644004	HA00067-04	EPA 200.8	BSL	1	PASI-O
35851644005	HA00067-05	EPA 200.8	BSL	1	PASI-O
35851644006	HA00067-06	EPA 200.8	BSL	1	PASI-O
35851644007	HA00067-07	EPA 200.8	BSL	1	PASI-O
35851644008	HA00067-08	EPA 200.8	BSL	1	PASI-O
35851644009	HA00067-09	EPA 200.8	BSL	1	PASI-O
35851644010	HA00067-10	EPA 200.8	BSL	1	PASI-O
35851644011	HA00067-11	EPA 200.8	BSL	1	PASI-O
35851644012	HA00067-12	EPA 200.8	BSL	1	PASI-O
35851644013	HA00067-13	EPA 200.8	BSL	1	PASI-O
35851644014	HA00067-14	EPA 200.8	BSL	1	PASI-O
35851644015	HA00067-15	EPA 200.8	BSL	1	PASI-O
35851644016	HA00067-16	EPA 200.8	BSL	1	PASI-O
35851644017	HA00067-17	EPA 200.8	BSL	1	PASI-O
35851644018	HA00067-18	EPA 200.8	BSL	1	PASI-O
35851644019	HA00067-19	EPA 200.8	BSL	1	PASI-O
35851644020	HA00067-20	EPA 200.8	BSL	1	PASI-O
35851644021	HA00067-21	EPA 200.8	BSL	1	PASI-O
35851644022	HA00067-22	EPA 200.8	BSL	1	PASI-O
35851644023	HA00067-23	EPA 200.8	BSL	1	PASI-O
35851644024	HA00067-24	EPA 200.8	BSL	1	PASI-O
35851644025	HA00067-25	EPA 200.8	BSL	1	PASI-O
35851644026	HA00067-26	EPA 200.8	BSL	1	PASI-O
35851644027	HA00067-27	EPA 200.8	BSL	1	PASI-O
35851644028	HA00067-28	EPA 200.8	BSL	1	PASI-O

PASI-O = Pace Analytical Services - Ormond Beach

REPORT OF LABORATORY ANALYSIS

This report shall not be reproduced, except in full,
without the written consent of Pace Analytical Services, LLC.



ANALYTICAL RESULTS

Project: HA00067

Pace Project No.: 35851644

Sample: HA00067-01		Lab ID: 35851644001	Collected: 12/22/23 22:42	Received: 01/04/24 10:25	Matrix: Drinking Water			
Parameters	Results	Units	Report Limit	DF	Prepared	Analyzed	CAS No.	Qual
200.8 MET ICPMS Drinking Water		Analytical Method: EPA 200.8 Pace Analytical Services - Ormond Beach						
Lead	ND	ug/L	1.0	1		01/07/24 22:16	7439-92-1	

REPORT OF LABORATORY ANALYSIS

This report shall not be reproduced, except in full,
without the written consent of Pace Analytical Services, LLC.



ANALYTICAL RESULTS

Project: HA00067

Pace Project No.: 35851644

Parameters	Results	Units	Report Limit	DF	Prepared	Analyzed	CAS No.	Qual
Sample: HA00067-02								
Lab ID: 35851644002								
Collected: 12/22/23 22:43								
Received: 01/04/24 10:25								
Matrix: Drinking Water								
200.8 MET ICPMS Drinking Water								
Analytical Method: EPA 200.8								
Pace Analytical Services - Ormond Beach								
Lead	ND	ug/L	1.0	1		01/07/24 22:18	7439-92-1	

REPORT OF LABORATORY ANALYSIS

This report shall not be reproduced, except in full, without the written consent of Pace Analytical Services, LLC.



ANALYTICAL RESULTS

Project: HA00067
Pace Project No.: 35851644

Sample: HA00067-03		Lab ID: 35851644003	Collected: 12/22/23 22:44	Received: 01/04/24 10:25	Matrix: Drinking Water			
Parameters	Results	Units	Report Limit	DF	Prepared	Analyzed	CAS No.	Qual
200.8 MET ICPMS Drinking Water		Analytical Method: EPA 200.8 Pace Analytical Services - Ormond Beach						
Lead	2.9	ug/L	1.0	1		01/07/24 22:19	7439-92-1	

REPORT OF LABORATORY ANALYSIS

This report shall not be reproduced, except in full,
without the written consent of Pace Analytical Services, LLC.



ANALYTICAL RESULTS

Project: HA00067

Pace Project No.: 35851644

Parameters	Results	Units	Report Limit	DF	Prepared	Analyzed	CAS No.	Qual
Sample: HA00067-04								
Lab ID: 35851644004								
Collected: 12/22/23 22:48								
Received: 01/04/24 10:25								
Matrix: Drinking Water								
200.8 MET ICPMS Drinking Water								
Analytical Method: EPA 200.8								
Pace Analytical Services - Ormond Beach								
Lead	8.9	ug/L	1.0	1		01/07/24 22:21	7439-92-1	

REPORT OF LABORATORY ANALYSIS

This report shall not be reproduced, except in full, without the written consent of Pace Analytical Services, LLC.



ANALYTICAL RESULTS

Project: HA00067
Pace Project No.: 35851644

Parameters	Results	Units	Report Limit	DF	Prepared	Analyzed	CAS No.	Qual
Sample: HA00067-05								
Lab ID: 35851644005								
Collected: 12/22/23 22:50								
Received: 01/04/24 10:25								
Matrix: Drinking Water								
200.8 MET ICPMS Drinking Water								
Analytical Method: EPA 200.8								
Pace Analytical Services - Ormond Beach								
Lead	6.9	ug/L	1.0	1		01/07/24 22:22	7439-92-1	

REPORT OF LABORATORY ANALYSIS

This report shall not be reproduced, except in full,
without the written consent of Pace Analytical Services, LLC.



ANALYTICAL RESULTS

Project: HA00067

Pace Project No.: 35851644

Sample: HA00067-06	Lab ID: 35851644006	Collected: 12/22/23 22:52	Received: 01/04/24 10:25	Matrix: Drinking Water				
Parameters	Results	Units	Report Limit	DF	Prepared	Analyzed	CAS No.	Qual
200.8 MET ICPMS Drinking Water	Analytical Method: EPA 200.8 Pace Analytical Services - Ormond Beach							
Lead	2.1	ug/L	1.0	1		01/07/24 22:23	7439-92-1	

REPORT OF LABORATORY ANALYSIS

This report shall not be reproduced, except in full,
without the written consent of Pace Analytical Services, LLC.



ANALYTICAL RESULTS

Project: HA00067

Pace Project No.: 35851644

Sample: HA00067-07		Lab ID: 35851644007	Collected: 12/22/23 22:57	Received: 01/04/24 10:25	Matrix: Drinking Water			
Parameters	Results	Units	Report Limit	DF	Prepared	Analyzed	CAS No.	Qual
200.8 MET ICPMS Drinking Water		Analytical Method: EPA 200.8 Pace Analytical Services - Ormond Beach						
Lead	ND	ug/L	1.0	1		01/07/24 22:25	7439-92-1	

REPORT OF LABORATORY ANALYSIS

This report shall not be reproduced, except in full,
without the written consent of Pace Analytical Services, LLC.



ANALYTICAL RESULTS

Project: HA00067
 Pace Project No.: 35851644

Parameters	Results	Units	Report Limit	DF	Prepared	Analyzed	CAS No.	Qual
Sample: HA00067-08								
Lab ID: 35851644008								
Collected: 12/22/23 22:58 Received: 01/04/24 10:25 Matrix: Drinking Water								
200.8 MET ICPMS Drinking Water								
Analytical Method: EPA 200.8								
Pace Analytical Services - Ormond Beach								
Lead	ND	ug/L	1.0	1		01/07/24 22:26	7439-92-1	

REPORT OF LABORATORY ANALYSIS

This report shall not be reproduced, except in full,
 without the written consent of Pace Analytical Services, LLC.



ANALYTICAL RESULTS

Project: HA00067

Pace Project No.: 35851644

Sample: HA00067-09		Lab ID: 35851644009	Collected: 12/22/23 23:00	Received: 01/04/24 10:25	Matrix: Drinking Water			
Parameters	Results	Units	Report Limit	DF	Prepared	Analyzed	CAS No.	Qual
200.8 MET ICPMS Drinking Water		Analytical Method: EPA 200.8 Pace Analytical Services - Ormond Beach						
Lead	ND	ug/L	1.0	1		01/07/24 22:28	7439-92-1	

REPORT OF LABORATORY ANALYSIS

This report shall not be reproduced, except in full,
without the written consent of Pace Analytical Services, LLC.



ANALYTICAL RESULTS

Project: HA00067

Pace Project No.: 35851644

Sample: HA00067-10		Lab ID: 35851644010	Collected: 12/22/23 23:02	Received: 01/04/24 10:25	Matrix: Drinking Water			
Parameters	Results	Units	Report Limit	DF	Prepared	Analyzed	CAS No.	Qual
200.8 MET ICPMS Drinking Water		Analytical Method: EPA 200.8 Pace Analytical Services - Ormond Beach						
Lead	ND	ug/L	1.0	1		01/07/24 22:32	7439-92-1	

REPORT OF LABORATORY ANALYSIS

This report shall not be reproduced, except in full, without the written consent of Pace Analytical Services, LLC.



ANALYTICAL RESULTS

Project: HA00067

Pace Project No.: 35851644

Parameters	Results	Units	Report Limit	DF	Prepared	Analyzed	CAS No.	Qual
Sample: HA00067-11								
Lab ID: 35851644011								
Collected: 12/22/23 23:04 Received: 01/04/24 10:25 Matrix: Drinking Water								
200.8 MET ICPMS Drinking Water	Analytical Method: EPA 200.8 Pace Analytical Services - Ormond Beach							
Lead	1.4	ug/L	1.0	1		01/07/24 22:33	7439-92-1	

REPORT OF LABORATORY ANALYSIS

This report shall not be reproduced, except in full,
without the written consent of Pace Analytical Services, LLC.



ANALYTICAL RESULTS

Project: HA00067

Pace Project No.: 35851644

Sample: HA00067-12		Lab ID: 35851644012	Collected: 12/22/23 23:05	Received: 01/04/24 10:25	Matrix: Drinking Water			
Parameters	Results	Units	Report Limit	DF	Prepared	Analyzed	CAS No.	Qual
200.8 MET ICPMS Drinking Water		Analytical Method: EPA 200.8 Pace Analytical Services - Ormond Beach						
Lead	ND	ug/L	1.0	1		01/07/24 22:40	7439-92-1	

REPORT OF LABORATORY ANALYSIS

This report shall not be reproduced, except in full,
without the written consent of Pace Analytical Services, LLC.



ANALYTICAL RESULTS

Project: HA00067

Pace Project No.: 35851644

Parameters	Results	Units	Report Limit	DF	Prepared	Analyzed	CAS No.	Qual
Sample: HA00067-13								
Lab ID: 35851644013								
Collected: 12/22/23 23:06 Received: 01/04/24 10:25 Matrix: Drinking Water								
200.8 MET ICPMS Drinking Water								
Analytical Method: EPA 200.8								
Pace Analytical Services - Ormond Beach								
Lead	1.7	ug/L	1.0	1		01/07/24 22:45	7439-92-1	

REPORT OF LABORATORY ANALYSIS

This report shall not be reproduced, except in full, without the written consent of Pace Analytical Services, LLC.



ANALYTICAL RESULTS

Project: HA00067
Pace Project No.: 35851644

Sample: HA00067-14		Lab ID: 35851644014	Collected: 12/22/23 23:07	Received: 01/04/24 10:25	Matrix: Drinking Water			
Parameters	Results	Units	Report Limit	DF	Prepared	Analyzed	CAS No.	Qual
200.8 MET ICPMS Drinking Water		Analytical Method: EPA 200.8 Pace Analytical Services - Ormond Beach						
Lead	ND	ug/L	1.0	1		01/07/24 22:49	7439-92-1	

REPORT OF LABORATORY ANALYSIS

This report shall not be reproduced, except in full,
without the written consent of Pace Analytical Services, LLC.



ANALYTICAL RESULTS

Project: HA00067

Pace Project No.: 35851644

Sample: HA00067-15		Lab ID: 35851644015	Collected: 12/22/23 23:08	Received: 01/04/24 10:25	Matrix: Drinking Water			
Parameters	Results	Units	Report Limit	DF	Prepared	Analyzed	CAS No.	Qual
200.8 MET ICPMS Drinking Water		Analytical Method: EPA 200.8 Pace Analytical Services - Ormond Beach						
Lead	ND	ug/L	1.0	1		01/07/24 22:51	7439-92-1	

REPORT OF LABORATORY ANALYSIS

This report shall not be reproduced, except in full,
without the written consent of Pace Analytical Services, LLC.



ANALYTICAL RESULTS

Project: HA00067

Pace Project No.: 35851644

Parameters	Results	Units	Report Limit	DF	Prepared	Analyzed	CAS No.	Qual
Sample: HA00067-16								
Lab ID: 35851644016								
Collected: 12/22/23 23:11								
Received: 01/04/24 10:25								
Matrix: Drinking Water								
200.8 MET ICPMS Drinking Water								
Analytical Method: EPA 200.8								
Pace Analytical Services - Ormond Beach								
Lead	ND	ug/L	1.0	1		01/07/24 22:52	7439-92-1	

REPORT OF LABORATORY ANALYSIS

This report shall not be reproduced, except in full, without the written consent of Pace Analytical Services, LLC.



ANALYTICAL RESULTS

Project: HA00067
Pace Project No.: 35851644

Sample: HA00067-17		Lab ID: 35851644017	Collected: 12/22/23 23:12	Received: 01/04/24 10:25	Matrix: Drinking Water			
Parameters	Results	Units	Report Limit	DF	Prepared	Analyzed	CAS No.	Qual
200.8 MET ICPMS Drinking Water		Analytical Method: EPA 200.8 Pace Analytical Services - Ormond Beach						
Lead	ND	ug/L	1.0	1		01/07/24 22:53	7439-92-1	

REPORT OF LABORATORY ANALYSIS

This report shall not be reproduced, except in full,
without the written consent of Pace Analytical Services, LLC.



ANALYTICAL RESULTS

Project: HA00067

Pace Project No.: 35851644

Sample: HA00067-18		Lab ID: 35851644018	Collected: 12/22/23 23:14	Received: 01/04/24 10:25	Matrix: Drinking Water			
Parameters	Results	Units	Report Limit	DF	Prepared	Analyzed	CAS No.	Qual
200.8 MET ICPMS Drinking Water		Analytical Method: EPA 200.8 Pace Analytical Services - Ormond Beach						
Lead	ND	ug/L	1.0	1		01/07/24 22:55	7439-92-1	

REPORT OF LABORATORY ANALYSIS

This report shall not be reproduced, except in full,
without the written consent of Pace Analytical Services, LLC.



ANALYTICAL RESULTS

Project: HA00067

Pace Project No.: 35851644

Parameters	Results	Units	Report Limit	DF	Prepared	Analyzed	CAS No.	Qual
Sample: HA00067-19								
Lab ID: 35851644019								
Collected: 12/22/23 23:14 Received: 01/04/24 10:25 Matrix: Drinking Water								
200.8 MET ICPMS Drinking Water								
Analytical Method: EPA 200.8								
Pace Analytical Services - Ormond Beach								
Lead	ND	ug/L	1.0	1		01/07/24 22:56	7439-92-1	

REPORT OF LABORATORY ANALYSIS

This report shall not be reproduced, except in full, without the written consent of Pace Analytical Services, LLC.



ANALYTICAL RESULTS

Project: HA00067

Pace Project No.: 35851644

Sample: HA00067-20		Lab ID: 35851644020	Collected: 12/22/23 23:15	Received: 01/04/24 10:25	Matrix: Drinking Water			
Parameters	Results	Units	Report Limit	DF	Prepared	Analyzed	CAS No.	Qual
200.8 MET ICPMS Drinking Water		Analytical Method: EPA 200.8 Pace Analytical Services - Ormond Beach						
Lead	8.3	ug/L	1.0	1		01/07/24 22:58	7439-92-1	

REPORT OF LABORATORY ANALYSIS

This report shall not be reproduced, except in full,
without the written consent of Pace Analytical Services, LLC.



ANALYTICAL RESULTS

Project: HA00067

Pace Project No.: 35851644

Sample: HA00067-21		Lab ID: 35851644021	Collected: 12/22/23 23:18	Received: 01/04/24 10:25	Matrix: Drinking Water			
Parameters	Results	Units	Report Limit	DF	Prepared	Analyzed	CAS No.	Qual
200.8 MET ICPMS Drinking Water		Analytical Method: EPA 200.8 Pace Analytical Services - Ormond Beach						
Lead	8.7	ug/L	1.0	1		01/07/24 22:59	7439-92-1	

REPORT OF LABORATORY ANALYSIS

This report shall not be reproduced, except in full,
without the written consent of Pace Analytical Services, LLC.



ANALYTICAL RESULTS

Project: HA00067

Pace Project No.: 35851644

Sample: HA00067-22		Lab ID: 35851644022	Collected: 12/22/23 23:20	Received: 01/04/24 10:25	Matrix: Drinking Water			
Parameters	Results	Units	Report Limit	DF	Prepared	Analyzed	CAS No.	Qual
200.8 MET ICPMS Drinking Water		Analytical Method: EPA 200.8 Pace Analytical Services - Ormond Beach						
Lead	6.7	ug/L	1.0	1		01/07/24 23:00	7439-92-1	

REPORT OF LABORATORY ANALYSIS

This report shall not be reproduced, except in full,
without the written consent of Pace Analytical Services, LLC.



ANALYTICAL RESULTS

Project: HA00067
Pace Project No.: 35851644

Sample: HA00067-23		Lab ID: 35851644023	Collected: 12/22/23 23:20	Received: 01/04/24 10:25	Matrix: Drinking Water			
Parameters	Results	Units	Report Limit	DF	Prepared	Analyzed	CAS No.	Qual
200.8 MET ICPMS Drinking Water		Analytical Method: EPA 200.8 Pace Analytical Services - Ormond Beach						
Lead	7.9	ug/L	1.0	1		01/07/24 23:02	7439-92-1	

REPORT OF LABORATORY ANALYSIS

This report shall not be reproduced, except in full,
without the written consent of Pace Analytical Services, LLC.



ANALYTICAL RESULTS

Project: HA00067

Pace Project No.: 35851644

Parameters	Results	Units	Report Limit	DF	Prepared	Analyzed	CAS No.	Qual
Sample: HA00067-24								
Lab ID: 35851644024								
Collected: 12/22/23 23:24								
Received: 01/04/24 10:25								
Matrix: Drinking Water								
200.8 MET ICPMS Drinking Water								
Analytical Method: EPA 200.8								
Pace Analytical Services - Ormond Beach								
Lead	11.3	ug/L	1.0	1		01/07/24 23:06	7439-92-1	

REPORT OF LABORATORY ANALYSIS

This report shall not be reproduced, except in full, without the written consent of Pace Analytical Services, LLC.



ANALYTICAL RESULTS

Project: HA00067

Pace Project No.: 35851644

Parameters	Results	Units	Report Limit	DF	Prepared	Analyzed	CAS No.	Qual
Sample: HA00067-25								
Lab ID: 35851644025								
Collected: 12/22/23 23:26 Received: 01/04/24 10:25 Matrix: Drinking Water								
200.8 MET ICPMS Drinking Water								
Analytical Method: EPA 200.8								
Pace Analytical Services - Ormond Beach								
Lead	21.0	ug/L	1.0	1		01/07/24 23:08	7439-92-1	

REPORT OF LABORATORY ANALYSIS

This report shall not be reproduced, except in full, without the written consent of Pace Analytical Services, LLC.



ANALYTICAL RESULTS

Project: HA00067

Pace Project No.: 35851644

Sample: HA00067-26		Lab ID: 35851644026	Collected: 12/22/23 23:27	Received: 01/04/24 10:25	Matrix: Drinking Water			
Parameters	Results	Units	Report Limit	DF	Prepared	Analyzed	CAS No.	Qual
200.8 MET ICPMS Drinking Water		Analytical Method: EPA 200.8 Pace Analytical Services - Ormond Beach						
Lead	11.8	ug/L	1.0	1		01/07/24 23:09	7439-92-1	

REPORT OF LABORATORY ANALYSIS

This report shall not be reproduced, except in full,
without the written consent of Pace Analytical Services, LLC.



ANALYTICAL RESULTS

Project: HA00067

Pace Project No.: 35851644

Sample: HA00067-27		Lab ID: 35851644027	Collected: 12/22/23 23:29	Received: 01/04/24 10:25	Matrix: Drinking Water			
Parameters	Results	Units	Report Limit	DF	Prepared	Analyzed	CAS No.	Qual
200.8 MET ICPMS Drinking Water		Analytical Method: EPA 200.8 Pace Analytical Services - Ormond Beach						
Lead	14.9	ug/L	1.0	1		01/07/24 23:10	7439-92-1	

REPORT OF LABORATORY ANALYSIS

This report shall not be reproduced, except in full,
without the written consent of Pace Analytical Services, LLC.



ANALYTICAL RESULTS

Project: HA00067

Pace Project No.: 35851644

Sample: HA00067-28		Lab ID: 35851644028	Collected: 12/22/23 23:30	Received: 01/04/24 10:25	Matrix: Drinking Water			
Parameters	Results	Units	Report Limit	DF	Prepared	Analyzed	CAS No.	Qual
200.8 MET ICPMS Drinking Water		Analytical Method: EPA 200.8 Pace Analytical Services - Ormond Beach						
Lead	5.3	ug/L	1.0	1		01/07/24 23:12	7439-92-1	

REPORT OF LABORATORY ANALYSIS

This report shall not be reproduced, except in full,
without the written consent of Pace Analytical Services, LLC.



QUALITY CONTROL DATA

Project: HA00067

Pace Project No.: 35851644

QC Batch:	978726	Analysis Method:	EPA 200.8
QC Batch Method:	EPA 200.8	Analysis Description:	200.8 MET No Prep Drinking Water
		Laboratory:	Pace Analytical Services - Ormond Beach
Associated Lab Samples:	35851644001, 35851644002, 35851644003, 35851644004, 35851644005, 35851644006, 35851644007, 35851644008, 35851644009, 35851644010, 35851644011		

METHOD BLANK:	5384787	Matrix:	Water
Associated Lab Samples:	35851644001, 35851644002, 35851644003, 35851644004, 35851644005, 35851644006, 35851644007, 35851644008, 35851644009, 35851644010, 35851644011		

Parameter	Units	Blank Result	Reporting Limit	Analyzed	Qualifiers
Lead	ug/L	ND	1.0	01/07/24 22:38	

LABORATORY CONTROL SAMPLE: 5384788						
Parameter	Units	Spike Conc.	LCS Result	LCS % Rec	% Rec Limits	Qualifiers
Lead	ug/L	50	51.2	102	85-115	

MATRIX SPIKE & MATRIX SPIKE DUPLICATE: 5384783											5384784	
Parameter	Units	35851638002 Result	MS Spike Conc.	MSD Spike Conc.	MS Result	MSD Result	MS % Rec	MSD % Rec	% Rec Limits	RPD	Qual	
Lead	ug/L	ND	50	50	52.0	52.0	102	102	70-130	0		

MATRIX SPIKE & MATRIX SPIKE DUPLICATE: 5384785											5384786	
Parameter	Units	35851644011 Result	MS Spike Conc.	MSD Spike Conc.	MS Result	MSD Result	MS % Rec	MSD % Rec	% Rec Limits	RPD	Qual	
Lead	ug/L	1.4	50	50	51.7	51.2	101	100	70-130	1		

Results presented on this page are in the units indicated by the "Units" column except where an alternate unit is presented to the right of the result.

REPORT OF LABORATORY ANALYSIS

This report shall not be reproduced, except in full, without the written consent of Pace Analytical Services, LLC.



QUALITY CONTROL DATA

Project: HA00067

Pace Project No.: 35851644

QC Batch:	978728	Analysis Method:	EPA 200.8
QC Batch Method:	EPA 200.8	Analysis Description:	200.8 MET No Prep Drinking Water
		Laboratory:	Pace Analytical Services - Ormond Beach
Associated Lab Samples:	35851644012, 35851644013, 35851644014, 35851644015, 35851644016, 35851644017, 35851644018, 35851644019, 35851644020, 35851644021, 35851644022, 35851644023, 35851644024, 35851644025, 35851644026, 35851644027, 35851644028		

METHOD BLANK:	5384797	Matrix:	Water
Associated Lab Samples:	35851644012, 35851644013, 35851644014, 35851644015, 35851644016, 35851644017, 35851644018, 35851644019, 35851644020, 35851644021, 35851644022, 35851644023, 35851644024, 35851644025, 35851644026, 35851644027, 35851644028		

Parameter	Units	Blank Result	Reporting Limit	Analyzed	Qualifiers
Lead	ug/L	ND	1.0	01/07/24 23:23	

LABORATORY CONTROL SAMPLE:	5384798					
Parameter	Units	Spike Conc.	LCS Result	LCS % Rec	% Rec Limits	Qualifiers
Lead	ug/L	50	50.0	100	85-115	

MATRIX SPIKE & MATRIX SPIKE DUPLICATE:	5384793			5384794							
Parameter	Units	35851644012 Result	MS Spike Conc.	MSD Spike Conc.	MS Result	MSD Result	MS % Rec	MSD % Rec	% Rec Limits	RPD	Qual
Lead	ug/L	ND	50	50	51.4	51.7	102	102	70-130	1	

MATRIX SPIKE & MATRIX SPIKE DUPLICATE:	5384795			5384796							
Parameter	Units	35851645003 Result	MS Spike Conc.	MSD Spike Conc.	MS Result	MSD Result	MS % Rec	MSD % Rec	% Rec Limits	RPD	Qual
Lead	ug/L	ND	50	50	50.4	50.6	100	100	70-130	0	

Results presented on this page are in the units indicated by the "Units" column except where an alternate unit is presented to the right of the result.

REPORT OF LABORATORY ANALYSIS

This report shall not be reproduced, except in full, without the written consent of Pace Analytical Services, LLC.



QUALIFIERS

Project: HA00067

Pace Project No.: 35851644

DEFINITIONS

DF - Dilution Factor, if reported, represents the factor applied to the reported data due to dilution of the sample aliquot.

ND - Not Detected at or above adjusted reporting limit.

TNTC - Too Numerous To Count

MDL - Adjusted Method Detection Limit.

PQL - Practical Quantitation Limit.

RL - Reporting Limit - The lowest concentration value that meets project requirements for quantitative data with known precision and bias for a specific analyte in a specific matrix.

S - Surrogate

1,2-Diphenylhydrazine decomposes to and cannot be separated from Azobenzene using Method 8270. The result for each analyte is a combined concentration.

Consistent with EPA guidelines, unrounded data are displayed and have been used to calculate % recovery and RPD values.

LCS(D) - Laboratory Control Sample (Duplicate)

MS(D) - Matrix Spike (Duplicate)

DUP - Sample Duplicate

RPD - Relative Percent Difference

NC - Not Calculable.

SG - Silica Gel - Clean-Up

U - Indicates the compound was analyzed for, but not detected.

N-Nitrosodiphenylamine decomposes and cannot be separated from Diphenylamine using Method 8270. The result reported for each analyte is a combined concentration.

Reported results are not rounded until the final step prior to reporting. Therefore, calculated parameters that are typically reported as "Total" may vary slightly from the sum of the reported component parameters.

Pace Analytical is TNI accredited. Contact your Pace PM for the current list of accredited analytes.

TNI - The NELAC Institute.

REPORT OF LABORATORY ANALYSIS

This report shall not be reproduced, except in full,
without the written consent of Pace Analytical Services, LLC.



QUALITY CONTROL DATA CROSS REFERENCE TABLE

Project: HA00067

Pace Project No.: 35851644

Lab ID	Sample ID	QC Batch Method	QC Batch	Analytical Method	Analytical Batch
35851644001	HA00067-01	EPA 200.8	978726		
35851644002	HA00067-02	EPA 200.8	978726		
35851644003	HA00067-03	EPA 200.8	978726		
35851644004	HA00067-04	EPA 200.8	978726		
35851644005	HA00067-05	EPA 200.8	978726		
35851644006	HA00067-06	EPA 200.8	978726		
35851644007	HA00067-07	EPA 200.8	978726		
35851644008	HA00067-08	EPA 200.8	978726		
35851644009	HA00067-09	EPA 200.8	978726		
35851644010	HA00067-10	EPA 200.8	978726		
35851644011	HA00067-11	EPA 200.8	978726		
35851644012	HA00067-12	EPA 200.8	978728		
35851644013	HA00067-13	EPA 200.8	978728		
35851644014	HA00067-14	EPA 200.8	978728		
35851644015	HA00067-15	EPA 200.8	978728		
35851644016	HA00067-16	EPA 200.8	978728		
35851644017	HA00067-17	EPA 200.8	978728		
35851644018	HA00067-18	EPA 200.8	978728		
35851644019	HA00067-19	EPA 200.8	978728		
35851644020	HA00067-20	EPA 200.8	978728		
35851644021	HA00067-21	EPA 200.8	978728		
35851644022	HA00067-22	EPA 200.8	978728		
35851644023	HA00067-23	EPA 200.8	978728		
35851644024	HA00067-24	EPA 200.8	978728		
35851644025	HA00067-25	EPA 200.8	978728		
35851644026	HA00067-26	EPA 200.8	978728		
35851644027	HA00067-27	EPA 200.8	978728		
35851644028	HA00067-28	EPA 200.8	978728		

REPORT OF LABORATORY ANALYSIS

This report shall not be reproduced, except in full, without the written consent of Pace Analytical Services, LLC.

WO# : 35851644**SUBCONTRACT ORDER
Transfer Chain of Custody**

35851644

Pace Analytical Services, LLC

HA00067

SENDING LABORATORYPDC Laboratories, Inc.
2231 W Altorfer Dr
Peoria, IL 61615
(800) 752-6651RECEIVING LABORATORYPace Analytical - Ormond Beach
8 East Tower Circle
Ormond Beach, FL 32174
(386) 676-4842**Sample: HA00067-01**
Name: SJ - 1**Sampled: 12/22/23 21:42**
Matrix: Drinking Water
Preservative: HNO3, pH <2

Analysis	Due	Expires	Comments
01-Pb 200.8 DW Schools	01/15/24 16:00	06/19/24 21:42	
01-Pb 200.8 DW Schools	01/15/24 16:00	06/19/24 21:42	

Sample: HA00067-02
Name: SJ - 2**Sampled: 12/22/23 21:43**
Matrix: Drinking Water
Preservative: HNO3, pH <2

Analysis	Due	Expires	Comments
01-Pb 200.8 DW Schools	01/15/24 16:00	06/19/24 21:43	
01-Pb 200.8 DW Schools	01/15/24 16:00	06/19/24 21:43	

Sample: HA00067-03
Name: SJ - 3**Sampled: 12/22/23 21:44**
Matrix: Drinking Water
Preservative: HNO3, pH <2

Analysis	Due	Expires	Comments
01-Pb 200.8 DW Schools	01/15/24 16:00	06/19/24 21:44	
01-Pb 200.8 DW Schools	01/15/24 16:00	06/19/24 21:44	

Sample: HA00067-04
Name: SJ - 4**Sampled: 12/22/23 21:48**
Matrix: Drinking Water
Preservative: HNO3, pH <2

Analysis	Due	Expires	Comments
01-Pb 200.8 DW Schools	01/15/24 16:00	06/19/24 21:48	
01-Pb 200.8 DW Schools	01/15/24 16:00	06/19/24 21:48	

SUBCONTRACT ORDER
Transfer Chain of Custody
Pace Analytical Services, LLC
HA00067

SENDING LABORATORY

PDC Laboratories, Inc.
 2231 W Altorfer Dr
 Peoria, IL 61615
 (800) 752-6651

RECEIVING LABORATORY

Pace Analytical - Ormond Beach
 8 East Tower Circle
 Ormond Beach, FL 32174
 (386) 676-4842

Sample: HA00067-05
Name: SJ - 5

Sampled: 12/22/23 21:50
Matrix: Drinking Water
Preservative: HNO3, pH <2

Analysis	Due	Expires	Comments
01-Pb 200.8 DW Schools	01/15/24 16:00	06/19/24 21:50	
01-Pb 200.8 DW Schools	01/15/24 16:00	06/19/24 21:50	

Sample: HA00067-06
Name: SJ - 6

Sampled: 12/22/23 21:52
Matrix: Drinking Water
Preservative: HNO3, pH <2

Analysis	Due	Expires	Comments
01-Pb 200.8 DW Schools	01/15/24 16:00	06/19/24 21:52	
01-Pb 200.8 DW Schools	01/15/24 16:00	06/19/24 21:52	

Sample: HA00067-07
Name: SJ - 7

Sampled: 12/22/23 21:57
Matrix: Drinking Water
Preservative: HNO3, pH <2

Analysis	Due	Expires	Comments
01-Pb 200.8 DW Schools	01/15/24 16:00	06/19/24 21:57	
01-Pb 200.8 DW Schools	01/15/24 16:00	06/19/24 21:57	

Sample: HA00067-08
Name: SJ - 8

Sampled: 12/22/23 21:58
Matrix: Drinking Water
Preservative: HNO3, pH <2

Analysis	Due	Expires	Comments
01-Pb 200.8 DW Schools	01/15/24 16:00	06/19/24 21:58	
01-Pb 200.8 DW Schools	01/15/24 16:00	06/19/24 21:58	

SUBCONTRACT ORDER
Transfer Chain of Custody
Pace Analytical Services, LLC
HA00067

SENDING LABORATORY

PDC Laboratories, Inc.
 2231 W Altorfer Dr
 Peoria, IL 61615
 (800) 752-6651

RECEIVING LABORATORY

Pace Analytical - Ormond Beach
 8 East Tower Circle
 Ormond Beach, FL 32174
 (386) 676-4842

Sample: HA00067-09
Name: SJ - 9

Sampled: 12/22/23 22:00
Matrix: Drinking Water
Preservative: HNO3, pH <2

Analysis	Due	Expires	Comments
01-Pb 200.8 DW Schools	01/15/24 16:00	06/19/24 22:00	
01-Pb 200.8 DW Schools	01/15/24 16:00	06/19/24 22:00	

Sample: HA00067-10
Name: SJ - 10

Sampled: 12/22/23 22:02
Matrix: Drinking Water
Preservative: HNO3, pH <2

Analysis	Due	Expires	Comments
01-Pb 200.8 DW Schools	01/15/24 16:00	06/19/24 22:02	
01-Pb 200.8 DW Schools	01/15/24 16:00	06/19/24 22:02	

Sample: HA00067-11
Name: SJ - 11

Sampled: 12/22/23 22:04
Matrix: Drinking Water
Preservative: HNO3, pH <2

Analysis	Due	Expires	Comments
01-Pb 200.8 DW Schools	01/15/24 16:00	06/19/24 22:04	
01-Pb 200.8 DW Schools	01/15/24 16:00	06/19/24 22:04	

Sample: HA00067-12
Name: SJ - 12

Sampled: 12/22/23 22:05
Matrix: Drinking Water
Preservative: HNO3, pH <2

Analysis	Due	Expires	Comments
01-Pb 200.8 DW Schools	01/15/24 16:00	06/19/24 22:05	
01-Pb 200.8 DW Schools	01/15/24 16:00	06/19/24 22:05	

**SUBCONTRACT ORDER
Transfer Chain of Custody**

Pace Analytical Services, LLC

HA00067

SENDING LABORATORY

PDC Laboratories, Inc.
2231 W Altorfer Dr
Peoria, IL 61615
(800) 752-6651

RECEIVING LABORATORY

Pace Analytical - Ormond Beach
8 East Tower Circle
Ormond Beach, FL 32174
(386) 676-4842

Sample: HA00067-13
Name: SJ - 13

Sampled: 12/22/23 22:06
Matrix: Drinking Water
Preservative: HNO3, pH <2

Analysis	Due	Expires	Comments
01-Pb 200.8 DW Schools	01/15/24 16:00	06/19/24 22:06	
01-Pb 200.8 DW Schools	01/15/24 16:00	06/19/24 22:06	

Sample: HA00067-14
Name: SJ - 14

Sampled: 12/22/23 22:07
Matrix: Drinking Water
Preservative: HNO3, pH <2

Analysis	Due	Expires	Comments
01-Pb 200.8 DW Schools	01/15/24 16:00	06/19/24 22:07	
01-Pb 200.8 DW Schools	01/15/24 16:00	06/19/24 22:07	

Sample: HA00067-15
Name: SJ - 15

Sampled: 12/22/23 22:08
Matrix: Drinking Water
Preservative: HNO3, pH <2

Analysis	Due	Expires	Comments
01-Pb 200.8 DW Schools	01/15/24 16:00	06/19/24 22:08	
01-Pb 200.8 DW Schools	01/15/24 16:00	06/19/24 22:08	

Sample: HA00067-16
Name: SJ - 16

Sampled: 12/22/23 22:11
Matrix: Drinking Water
Preservative: HNO3, pH <2

Analysis	Due	Expires	Comments
01-Pb 200.8 DW Schools	01/15/24 16:00	06/19/24 22:11	
01-Pb 200.8 DW Schools	01/15/24 16:00	06/19/24 22:11	

**SUBCONTRACT ORDER
Transfer Chain of Custody**

Pace Analytical Services, LLC

HA00067

SENDING LABORATORY

PDC Laboratories, Inc.
2231 W Altorfer Dr
Peoria, IL 61615
(800) 752-6651

RECEIVING LABORATORY

Pace Analytical - Ormond Beach
8 East Tower Circle
Ormond Beach, FL 32174
(386) 676-4842

Sample: HA00067-17
Name: SJ - 17

Sampled: 12/22/23 22:12
Matrix: Drinking Water
Preservative: HNO3, pH <2

Analysis	Due	Expires	Comments
01-Pb 200.8 DW Schools	01/15/24 16:00	06/19/24 22:12	
01-Pb 200.8 DW Schools	01/15/24 16:00	06/19/24 22:12	

Sample: HA00067-18
Name: SJ - 18

Sampled: 12/22/23 22:14
Matrix: Drinking Water
Preservative: HNO3, pH <2

Analysis	Due	Expires	Comments
01-Pb 200.8 DW Schools	01/15/24 16:00	06/19/24 22:14	
01-Pb 200.8 DW Schools	01/15/24 16:00	06/19/24 22:14	

Sample: HA00067-19
Name: SJ - 19

Sampled: 12/22/23 22:14
Matrix: Drinking Water
Preservative: HNO3, pH <2

Analysis	Due	Expires	Comments
01-Pb 200.8 DW Schools	01/15/24 16:00	06/19/24 22:14	
01-Pb 200.8 DW Schools	01/15/24 16:00	06/19/24 22:14	

Sample: HA00067-20
Name: SJ - 20

Sampled: 12/22/23 22:15
Matrix: Drinking Water
Preservative: HNO3, pH <2

Analysis	Due	Expires	Comments
01-Pb 200.8 DW Schools	01/15/24 16:00	06/19/24 22:15	
01-Pb 200.8 DW Schools	01/15/24 16:00	06/19/24 22:15	

**SUBCONTRACT ORDER
Transfer Chain of Custody**

Pace Analytical Services, LLC

HA00067

SENDING LABORATORY

PDC Laboratories, Inc.
2231 W Altorfer Dr
Peoria, IL 61615
(800) 752-6651

RECEIVING LABORATORY

Pace Analytical - Ormond Beach
8 East Tower Circle
Ormond Beach, FL 32174
(386) 676-4842

Sample: HA00067-21
Name: SJ - 21

Sampled: 12/22/23 22:18
Matrix: Drinking Water
Preservative: HNO3, pH <2

Analysis	Due	Expires	Comments
01-Pb 200.8 DW Schools	01/15/24 16:00	06/19/24 22:18	
01-Pb 200.8 DW Schools	01/15/24 16:00	06/19/24 22:18	

Sample: HA00067-22
Name: SJ - 22

Sampled: 12/22/23 22:20
Matrix: Drinking Water
Preservative: HNO3, pH <2

Analysis	Due	Expires	Comments
01-Pb 200.8 DW Schools	01/15/24 16:00	06/19/24 22:20	
01-Pb 200.8 DW Schools	01/15/24 16:00	06/19/24 22:20	

Sample: HA00067-23
Name: SJ - 23

Sampled: 12/22/23 22:20
Matrix: Drinking Water
Preservative: HNO3, pH <2

Analysis	Due	Expires	Comments
01-Pb 200.8 DW Schools	01/15/24 16:00	06/19/24 22:20	
01-Pb 200.8 DW Schools	01/15/24 16:00	06/19/24 22:20	

Sample: HA00067-24
Name: SJ - 24

Sampled: 12/22/23 22:24
Matrix: Drinking Water
Preservative: HNO3, pH <2

Analysis	Due	Expires	Comments
01-Pb 200.8 DW Schools	01/15/24 16:00	06/19/24 22:24	
01-Pb 200.8 DW Schools	01/15/24 16:00	06/19/24 22:24	

**SUBCONTRACT ORDER
Transfer Chain of Custody**

Pace Analytical Services, LLC

HA00067

SENDING LABORATORY

PDC Laboratories, Inc.
2231 W Altorfer Dr
Peoria, IL 61615
(800) 752-6651

RECEIVING LABORATORY

Pace Analytical - Ormond Beach
8 East Tower Circle
Ormond Beach, FL 32174
(386) 676-4842

Sample: HA00067-25
Name: SJ - 25

Sampled: 12/22/23 22:26
Matrix: Drinking Water
Preservative: HNO3, pH <2

Analysis	Due	Expires	Comments
01-Pb 200.8 DW Schools	01/15/24 16:00	06/19/24 22:26	
01-Pb 200.8 DW Schools	01/15/24 16:00	06/19/24 22:26	

Sample: HA00067-26
Name: SJ - 26

Sampled: 12/22/23 22:27
Matrix: Drinking Water
Preservative: HNO3, pH <2

Analysis	Due	Expires	Comments
01-Pb 200.8 DW Schools	01/15/24 16:00	06/19/24 22:27	
01-Pb 200.8 DW Schools	01/15/24 16:00	06/19/24 22:27	

Sample: HA00067-27
Name: SJ - 27

Sampled: 12/22/23 22:29
Matrix: Drinking Water
Preservative: HNO3, pH <2

Analysis	Due	Expires	Comments
01-Pb 200.8 DW Schools	01/15/24 16:00	06/19/24 22:29	
01-Pb 200.8 DW Schools	01/15/24 16:00	06/19/24 22:29	

Sample: HA00067-28
Name: SJ - 28

Sampled: 12/22/23 22:30
Matrix: Drinking Water
Preservative: HNO3, pH <2

Analysis	Due	Expires	Comments
01-Pb 200.8 DW Schools	01/15/24 16:00	06/19/24 22:30	
01-Pb 200.8 DW Schools	01/15/24 16:00	06/19/24 22:30	

SUBCONTRACT ORDER
Transfer Chain of Custody

Pace Analytical Services, LLC

HA00067

Please email results to Chenise Lambert-Sykes at Chenise.Lambert-Sykes@pacelabs.com

EMIS 1/3/24

Date Shipped: 1/3/24 Total # of Containers: 28 Sample Origin (State): _____ PO #: _____

Turn-Around Time Requested NORMAL RUSH Date Results Needed: 1/14/24

<i>[Signature]</i>	<u>1/3/24 1457</u>	<u>TS1/pace</u>	<u>1/4/23 1005</u>	Sample Temperature Upon Receipt	_____ °C
Relinquished By	Date/Time	Received By	Date/Time	Sample(s) Received on Ice	Y or N
				Proper Bottles Received in Good Condition	Y or N
				Bottles Filled with Adequate Volume	Y or N
				Samples Received Within Hold Time	Y or N
Relinquished By	Date/Time	Received By	Date/Time	Date/Time Taken From Sample Bottle	Y or N



Sample Condition Upon Receipt Form (SCUR)

WO#: 35851644

PM: BTS Due Date: 01/11/24
 CLIENT: PACHAZ

Project #
 Project Manager:
 Client:

Date and Initials of person:

Examining contents: _____

Label: _____

Deliver: N/A

pH: _____

Initials: ZAB

Thermometer Used: T-409

Date: 1/14/24

Time: 1027

State of Origin: _____

For WV projects, all containers verified to ≤6 °C

Cooler #1 Temp. °C	<u>16.4</u> (Visual)	<u>-0.1</u> (Correction Factor)	<u>16.3</u> (Actual)
Cooler #2 Temp. °C	<u>17.2</u> (Visual)		<u>17.1</u> (Actual)
Cooler #3 Temp. °C	<u>15.6</u> (Visual)		<u>15.6</u> (Actual)
Cooler #4 Temp. °C	<u>14.5</u> (Visual)		<u>14.4</u> (Actual)
Cooler #5 Temp. °C	<u>15.8</u> (Visual)		<u>15.7</u> (Actual)
Cooler #6 Temp. °C	<u>16.3</u> (Visual)		<u>16.2</u> (Actual)

- Samples on ice, cooling process has begun.
- Samples on ice, cooling process has begun.
- Samples on ice, cooling process has begun.
- Samples on ice, cooling process has begun.
- Samples on ice, cooling process has begun.
- Samples on ice, cooling process has begun.

Time: _____ Initials: _____

Recheck for OOT °C _____ (Visual) _____ (Correction Factor) _____ (Actual)

Courier: Fed Ex UPS USPS Client Commercial Pace Other:

Shipping Method: Standard Overnight First Overnight Priority Overnight Ground International Priority Other:

Billing: Recipient Sender Third Party Credit Card Unknown

Tracking # 7003 7810 9851

Custody Seal Present: Yes No Seal properly placed and intact: Yes No

Ice: Wet Blue Dry None Melted

Packing Material: Bubble Wrap Bubble Bags None Other:

Samples shorted to lab: Yes No (if yes, complete the following)

Shorted Date: _____

Shorted Time: _____

Bottle Quantity / Type: _____

Chain of Custody:	Present: <input checked="" type="checkbox"/> Yes <input type="checkbox"/> No Filled Out: <input checked="" type="checkbox"/> Yes <input type="checkbox"/> No <input type="checkbox"/> N/A Sampler Name: <input checked="" type="checkbox"/> Yes <input type="checkbox"/> No <input type="checkbox"/> N/A
	Relinquished To Pace: <input checked="" type="checkbox"/> Yes <input type="checkbox"/> No <input type="checkbox"/> N/A Sampling Date(s): <input checked="" type="checkbox"/> Yes <input type="checkbox"/> No <input type="checkbox"/> N/A Sampling Time(s): <input checked="" type="checkbox"/> Yes <input type="checkbox"/> No <input type="checkbox"/> N/A
Samples Arrived within Hold Time.	<input checked="" type="checkbox"/> Yes <input type="checkbox"/> No <input type="checkbox"/> N/A Comments: _____
Rush Turnaround Requested on COC.	<input type="checkbox"/> Yes <input checked="" type="checkbox"/> No <input type="checkbox"/> N/A Comments: _____
Sufficient Volume.	<input checked="" type="checkbox"/> Yes <input type="checkbox"/> No <input type="checkbox"/> N/A Comments: _____
Correct Containers Used.	<input checked="" type="checkbox"/> Yes <input type="checkbox"/> No <input type="checkbox"/> N/A Comments: _____
Containers Intact.	<input checked="" type="checkbox"/> Yes <input type="checkbox"/> No <input type="checkbox"/> N/A Comments: _____
Sample Labels Match COC (Sample ID, Date/Time of Collection).	<input checked="" type="checkbox"/> Yes <input type="checkbox"/> No <input type="checkbox"/> N/A Comments: _____
All containers needing acid / base preservation have been checked.	<input checked="" type="checkbox"/> Yes <input type="checkbox"/> No <input type="checkbox"/> N/A
All containers needing preservation are found to be in compliance with EPA recommendation:	<input checked="" type="checkbox"/> Yes <input type="checkbox"/> No <input type="checkbox"/> N/A
Exceptions: Vials, Microbiology, O&G, PFAS	
Headspace in Volatile Vials? (>6mm):	<input type="checkbox"/> Yes <input type="checkbox"/> No <input checked="" type="checkbox"/> N/A
Trip Blank Present:	<input type="checkbox"/> Yes <input type="checkbox"/> No <input checked="" type="checkbox"/> N/A

Preservation Information

Preservative: _____ Date: _____

Lot / Trace: _____ Time: _____

Amount added (mL): _____ Initials: _____

Comments / Resolutions (use back for additional comments):



Sample Condition Upon Receipt Form (SCUR)

WO#: 35851644

PM: BTS Due Date: 01/11/24
 CLIENT: PACHAZ

Project #
 Project Manager:
 Client:

Date and Initials of person:

Examining contents: _____

Label: _____

Deliver: N/A

pH: _____

Initials: ZAB

Thermometer Used: T-409

Date: 1/4/24

Time: 1027

State of Origin: _____

For WV projects, all containers verified to $\leq 6^\circ\text{C}$

Cooler #1 Temp. °C 16.4 (Visual) -0.1 (Correction Factor) 16.3 (Actual)

Cooler #2 Temp. °C 17.2 (Visual) _____ (Correction Factor) 17.1 (Actual)

Cooler #3 Temp. °C 15.6 (Visual) _____ (Correction Factor) 15.5 (Actual)

Cooler #4 Temp. °C 14.5 (Visual) _____ (Correction Factor) 14.4 (Actual)

Cooler #5 Temp. °C 15.8 (Visual) _____ (Correction Factor) 15.7 (Actual)

Cooler #6 Temp. °C 16.3 (Visual) _____ (Correction Factor) 16.2 (Actual)

Recheck for OOT °C _____ (Visual) _____ (Correction Factor) _____ (Actual)

Courier: Fed Ex UPS USPS Client Commercial Pace Other:

Shipping Method: Standard Overnight First Overnight Priority Overnight Ground International Priority Other:

Billing: Recipient Sender Third Party Credit Card Unknown

Tracking # _____

Custody Seal Present: Yes No Seal properly placed and intact: Yes No

Ice: Wet Blue Dry None Melted

Packing Material: Bubble Wrap Bubble Bags None Other:

Samples shorted to lab: Yes No (If yes, complete the following)

Shorted Date: _____

Shorted Time: _____

Bottle Quantity / Type: _____

Chain of Custody:	Present: <input type="checkbox"/> Yes <input type="checkbox"/> No Filled Out: <input type="checkbox"/> Yes <input type="checkbox"/> No <input type="checkbox"/> N/A Sampler Name: <input type="checkbox"/> Yes <input type="checkbox"/> No <input type="checkbox"/> N/A								
	Relinquished To Pace: <input type="checkbox"/> Yes <input type="checkbox"/> No <input type="checkbox"/> N/A Sampling Date(s): <input type="checkbox"/> Yes <input type="checkbox"/> No <input type="checkbox"/> N/A Sampling Time(s): <input type="checkbox"/> Yes <input type="checkbox"/> No <input type="checkbox"/> N/A								
Samples Arrived within Hold Time.	<input type="checkbox"/> Yes <input type="checkbox"/> No <input type="checkbox"/> N/A Comments: _____								
Rush Turnaround Requested on COC.	<input type="checkbox"/> Yes <input type="checkbox"/> No <input type="checkbox"/> N/A Comments: _____								
Sufficient Volume	<input type="checkbox"/> Yes <input type="checkbox"/> No <input type="checkbox"/> N/A Comments: _____								
Correct Containers Used.	<input type="checkbox"/> Yes <input type="checkbox"/> No <input type="checkbox"/> N/A Comments: _____								
Containers Intact.	<input type="checkbox"/> Yes <input type="checkbox"/> No <input type="checkbox"/> N/A Comments: _____								
Sample Labels Match COC (Sample ID, Date/Time of Collection).	<input type="checkbox"/> Yes <input type="checkbox"/> No <input type="checkbox"/> N/A Comments: _____								
All containers needing acid / base preservation have been checked.	<input type="checkbox"/> Yes <input type="checkbox"/> No <input type="checkbox"/> N/A								
All containers needing preservation are found to be in compliance with EPA recommendation:	<input type="checkbox"/> Yes <input type="checkbox"/> No <input type="checkbox"/> N/A								
Exceptions: Vials, Microbiology, O&G, PFAS									
Headspace in Volatile Vials? (>6mm):	<input type="checkbox"/> Yes <input type="checkbox"/> No <input type="checkbox"/> N/A								
Trip Blank Present:	<input type="checkbox"/> Yes <input type="checkbox"/> No <input type="checkbox"/> N/A								
<table border="1"> <tr> <td colspan="2">Preservation Information</td> </tr> <tr> <td>Preservative: _____</td> <td>Date: _____</td> </tr> <tr> <td>Lot / Trace: _____</td> <td>Time: _____</td> </tr> <tr> <td>Amount added (mL): _____</td> <td>Initials: _____</td> </tr> </table>		Preservation Information		Preservative: _____	Date: _____	Lot / Trace: _____	Time: _____	Amount added (mL): _____	Initials: _____
Preservation Information									
Preservative: _____	Date: _____								
Lot / Trace: _____	Time: _____								
Amount added (mL): _____	Initials: _____								

Comments / Resolutions (use back for additional comments):



Sample Condition Upon Receipt Form (SCUR)

WO#: 35851644

PM: **BTS** Due Date: **01/11/24**
 CLIENT: **PACHAZ**

Project #
Project Manager:
Client:

Date and Initials of person: _____
 Examining contents: _____
 Label: _____
 Deliver: NOI
 pH: _____
 Initials: ZAB

Thermometer Used: T-409 Date: 1/14/24 Time: 1027

State of Origin: _____ For WW projects, all containers verified to $\leq 6^{\circ}\text{C}$

Cooler #1 Temp. °C	<u>4.4</u> (Visual)	<u>-0.1</u> (Correction Factor)	<u>4.5</u> (Actual)
Cooler #2 Temp. °C	<u>15.9</u> (Visual)		<u>15.8</u> (Actual)
Cooler #3 Temp. °C	<u>13.7</u> (Visual)		<u>13.6</u> (Actual)
Cooler #4 Temp. °C	<u>14.2</u> (Visual)		<u>14.1</u> (Actual)
Cooler #5 Temp. °C	<u>14.8</u> (Visual)		<u>14.7</u> (Actual)
Cooler #6 Temp. °C	<u>15.1</u> (Visual)		<u>15.0</u> (Actual)
Recheck for OOT °C	<u>16.2</u> (Visual)		<u>16.1</u> (Actual)

- Samples on ice, cooling process has begun.
 - Samples on ice, cooling process has begun.
 - Samples on ice, cooling process has begun.
 - Samples on ice, cooling process has begun.
 - Samples on ice, cooling process has begun.
 - Samples on ice, cooling process has begun.
- Time: _____ Initials: _____

Courier: Fed Ex UPS USPS Client Commercial Pace Other: _____

Shipping Method: Standard Overnight First Overnight Priority Overnight Ground International Priority Other: _____

Billing: Recipient Sender Third Party Credit Card Unknown

Tracking # _____

Custody Seal Present: Yes No Seal properly placed and intact: Yes No Ice: Wet Blue Dry None Melted

Packing Material: Bubble Wrap Bubble Bags None Other: _____

Samples shorted to lab: Yes No (if yes, complete the following)

Shorted Date: _____ Shorted Time: _____

Bottle Quantity / Type: _____



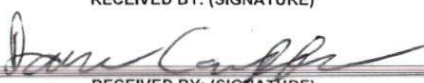
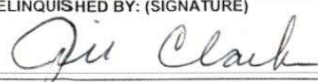



Chain of Custody:		Present: <input type="checkbox"/> Yes <input type="checkbox"/> No Filled Out: <input type="checkbox"/> Yes <input type="checkbox"/> No <input type="checkbox"/> N/A Sampler Name: <input type="checkbox"/> Yes <input type="checkbox"/> No <input type="checkbox"/> N/A
		Relinquished To Pace: <input type="checkbox"/> Yes <input type="checkbox"/> No <input type="checkbox"/> N/A Sampling Date(s): <input type="checkbox"/> Yes <input type="checkbox"/> No <input type="checkbox"/> N/A Sampling Time(s): <input type="checkbox"/> Yes <input type="checkbox"/> No <input type="checkbox"/> N/A
Samples Arrived within Hold Time	<input type="checkbox"/> Yes <input type="checkbox"/> No <input type="checkbox"/> N/A	Comments:
Rush Turnaround Requested on COC	<input type="checkbox"/> Yes <input type="checkbox"/> No <input type="checkbox"/> N/A	Comments:
Sufficient Volume	<input type="checkbox"/> Yes <input type="checkbox"/> No <input type="checkbox"/> N/A	Comments:
Correct Containers Used	<input type="checkbox"/> Yes <input type="checkbox"/> No <input type="checkbox"/> N/A	Comments:
Containers Intact	<input type="checkbox"/> Yes <input type="checkbox"/> No <input type="checkbox"/> N/A	Comments:
Sample Labels Match COC (Sample ID, Date/Time of Collection)	<input type="checkbox"/> Yes <input type="checkbox"/> No <input type="checkbox"/> N/A	Comments:
All containers needing acid / base preservation have been checked.	<input type="checkbox"/> Yes <input type="checkbox"/> No <input type="checkbox"/> N/A	Preservation Information Preservative: _____ Date: _____ Lot / Trace: _____ Time: _____ Amount added (mL): _____ Initials: _____
All containers needing preservation are found to be in compliance with EPA recommendation:	<input type="checkbox"/> Yes <input type="checkbox"/> No <input type="checkbox"/> N/A	
Exceptions: Vials, Microbiology, O&G, PFAS		
Headspace in Volatile Vials? (>6mm):	<input type="checkbox"/> Yes <input type="checkbox"/> No <input type="checkbox"/> N/A	
Trip Blank Present:	<input type="checkbox"/> Yes <input type="checkbox"/> No <input type="checkbox"/> N/A	

Comments / Resolutions (use back for additional comments): _____

REGULATORY PROGRAM (CIRCLE):	NPDES
MORBCA	RCRA
CCDD	TACO: RES OR IND/COMM

CHAIN OF CUSTODY RECORD
 STATE WHERE SAMPLE COLLECTED MO

ALL HIGHLIGHTED AREAS MUST BE COMPLETED BY CLIENT (PLEASE PRINT)

1 CLIENT SCI Engineering		PROJECT NUMBER 2016-0860-AT		PROJECT LOCATION Mosate		PURCHASE ORDER #		3 ANALYSIS REQUESTED		4 (FOR LAB USE ONLY) LOGIN # <u>HA00067</u> LOGGED BY: <u>SRP</u> CLIENT: SCI Engineering PROJECT: Drinking Water Lead PROJ. MGR.: Chenise Lambert-Sykes CUSTODY SEAL #: _____	
ADDRESS 130 Point West Blvd		PHONE NUMBER (314) 581-7570		E-MAIL ggriissom@sciengineering.com		DATE SHIPPED		<input checked="" type="checkbox"/> DW Pb <input checked="" type="checkbox"/> Turb Check		REMARKS	
CITY STATE ZIP St. Charles, MO 63301		SAMPLER (PLEASE PRINT) Dan Vreluber		SAMPLER'S SIGNATURE 		MATRIX TYPES: WW- WASTEWATER DW- DRINKING WATER GW- GROUND WATER WWSL- SLUDGE NAS- NON AQUEOUS SOLID LCIT- LEACHATE OIL- OIL SO- SOIL SOL- SOLID					
CONTACT PERSON Glen Grissom		DATE COLLECTED		TIME COLLECTED		SAMPLE TYPE GRAB COMP		MATRIX TYPE		BOTTLE COUNT	
SAMPLE DESCRIPTION (UNIQUE DESCRIPTION AS IT WILL APPEAR ON THE ANALYTICAL REPORT)										PRES CODE CLIENT PROVIDED	
SJ-1		12-22-23		2142		X		DW		1 6	
SJ-2				2143							
SJ-3				2144							
SJ-4				2148							
SJ-5				2150							
SJ-6				2152							
SJ-7				2157							
SJ-8				2158							
SJ-9				2200							
SJ-10				2202							
SJ-11				2204							
CHEMICAL PRESERVATION CODES:		1 - HCL		2 - H2SO4		3 - HNO3		4 - NAOH		5 - NA2S2O3	
6 - UNPRESERVED		7 - OTHER									
5 TURNAROUND TIME REQUESTED (PLEASE CIRCLE) (RUSH TAT IS SUBJECT TO PACE LABS APPROVAL AND SURCHARGE) RUSH RESULTS VIA (PLEASE CIRCLE) EMAIL PHONE EMAIL IF DIFFERENT FROM ABOVE: PHONE # IF DIFFERENT FROM ABOVE:		NORMAL RUSH		DATE RESULTS NEEDED		6 I understand that by initialing this box I give the lab permission to proceed with analysis, even though it may not meet all sample conformance requirements as defined in the receiving facility's Sample Acceptance Policy and the data will be qualified. Qualified data may NOT be acceptable to report to all regulatory authorities.		PROCEED WITH ANALYSIS AND QUALIFY RESULTS: (INITIALS) _____			
7 RELINQUISHED BY: (SIGNATURE) 		DATE 12-29-23		RECEIVED BY: (SIGNATURE) 		DATE 12/29/23		8 COMMENTS: (FOR LAB USE ONLY)			
TIME 1500						TIME 1640					
RELINQUISHED BY: (SIGNATURE) 		DATE 1/2/24		RECEIVED BY: (SIGNATURE) 		DATE 1-2-24		SAMPLE TEMPERATURE UPON RECEIPT IR 5		22.4 °C	
TIME 0805						TIME 1020		CHILL PROCESS STARTED PRIOR TO RECEIPT Y OR N		Y OR N	
RELINQUISHED BY: (SIGNATURE) 		DATE 1-2-24		RECEIVED BY: (SIGNATURE) 		DATE 1/2/27		SAMPLE(S) RECEIVED ON ICE Y OR N		Y OR N	
TIME 1535						TIME 1535		SAMPLE ACCEPTANCE NONCONFORMANT REPORT IS NEEDED Y OR N		Y OR N	
								DATE AND TIME TAKEN FROM SAMPLE B		Page 59 of 72	

REGULATORY PROGRAM (CIRCLE):	NPDES
MORBCA	RCRA
CCDD	TACO: RES OR IND/COMM

CHAIN OF CUSTODY RECORD
 STATE WHERE SAMPLE COLLECTED MO

ALL HIGHLIGHTED AREAS MUST BE COMPLETED BY CLIENT (PLEASE PRINT)

1 CLIENT SCI Engineering	PROJECT NUMBER 2016-0860-RT	PROJECT LOCATION Mosaic	PURCHASE ORDER #	3 ANALYSIS REQUESTED + +	4 (FOR LAB USE ONLY) LOGIN # <u>HA00067</u> LOGGED BY: <u>SJD</u> CLIENT: <u>SCI Engineering</u> PROJECT: <u>Drinking Water Lead</u> PROJ. MGR.: <u>Chenise Lambert-Sykes</u> CUSTODY SEAL #: _____
	ADDRESS 130 Point West Blvd	PHONE NUMBER (314) 581-7570	E-MAIL ggrissom@sciengineering.com		
CITY STATE ZIP St. Charles, MO 63301	SAMPLER (PLEASE PRINT) Dan Vreulker	SAMPLER'S SIGNATURE <i>Dan Vreulker</i>	MATRIX TYPES: WW- WASTEWATER DW- DRINKING WATER GW- GROUND WATER WWSL- SLUDGE NAS- NON AQUEOUS SOLID LCHL- LEACHATE OIL- OIL SO- SOIL SOL- SOLID		
CONTACT PERSON Glen Grissom					

2 SAMPLE DESCRIPTION (UNIQUE DESCRIPTION AS IT WILL APPEAR ON THE ANALYTICAL REPORT)	DATE COLLECTED	TIME COLLECTED	SAMPLE TYPE		MATRIX TYPE	BOTTLE COUNT	PRES CODE CLIENT PROVIDED	DW Pb	Turb Check	REMARKS
			GRAB	COMP						
SJ-12	12-22-23	2205	X		DW	1	6	X	X	
SJ-13		2206						X	X	
SJ-14		2207						X	X	
SJ-15		2208						X	X	
SJ-16		2211						X	X	
SJ-17		2212						X	X	
SJ-18		2214						X	X	
SJ-19		2214						X	X	
SJ-20		2215						X	X	
SJ-21		2218						X	X	
SJ-22		2220						X	X	

CHEMICAL PRESERVATION CODES: 1-HCL 2-H2SO4 3-HNO3 4-NAOH 5-NA2S2O3 6-UNPRESERVED 7-OTHER

5 TURNAROUND TIME REQUESTED (PLEASE CIRCLE) (NORMAL) RUSH	DATE RESULTS NEEDED	6 I understand that by initialing this box I give the lab permission to proceed with analysis, even though it may not meet all sample conformance requirements as defined in the receiving facility's Sample Acceptance Policy and the data will be qualified. Qualified data may NOT be acceptable to report to all regulatory authorities.
RUSH RESULTS VIA (PLEASE CIRCLE) EMAIL PHONE	PROCEED WITH ANALYSIS AND QUALIFY RESULTS: (INITIALS) _____	
EMAIL IF DIFFERENT FROM ABOVE: _____	PHONE # IF DIFFERENT FROM ABOVE: _____	

7 RELINQUISHED BY: (SIGNATURE)	DATE 12-29-23	RECEIVED BY: (SIGNATURE)	DATE 12/29/23	8 COMMENTS: (FOR LAB USE ONLY)
	TIME 1500	<i>Dan Campbell</i>	TIME 1640	
	RELINQUISHED BY: (SIGNATURE) <i>Jill Clark</i>	DATE 1/2/24	RECEIVED BY: (SIGNATURE) <i>Chenise Lambert-Sykes</i>	
RELINQUISHED BY: (SIGNATURE) <i>Chenise Lambert-Sykes</i>	DATE 1-2-24	RECEIVED BY: (SIGNATURE)	DATE 1/2/24	SAMPLE TEMPERATURE UPON RECEIPT IR5 <u>22.4</u> °C
	TIME 1535		TIME 1535	CHILL PROCESS STARTED PRIOR TO RECEIPT Y OR N SAMPLE(S) RECEIVED ON ICE Y OR N SAMPLE ACCEPTANCE NONCONFORMANT REPORT IS NEEDED Y OR N DATE AND TIME TAKEN FROM SAMPLE B

REGULATORY PROGRAM (CIRCLE):	NPDES
MORBCA	RCRA
CCDD	TACO: RES OR IND/COMM

ALL HIGHLIGHTED AREAS MUST BE COMPLETED BY CLIENT (PLEASE PRINT)

1 CLIENT SCI Engineering	PROJECT NUMBER 2016-0860-RT	PROJECT LOCATION Mosaic	PURCHASE ORDER #	3 ANALYSIS REQUESTED	4 (FOR LAB USE ONLY) LOGIN # <u>MA00067</u>
	ADDRESS 130 Point West Blvd	PHONE NUMBER (314) 581-7570	E-MAIL ggrissom@sciengineering.com		
CITY STATE ZIP St. Charles, MO 63301	SAMPLER (PLEASE PRINT) Dan Vrelwicker	MATRIX TYPES: <small>WW- WASTEWATER DW- DRINKING WATER GW- GROUND WATER WWSL- SLUDGE NAS- NON AQUEOUS SOLID LCHL- LEACHATE OIL- OIL SO- SOIL SOL- SOLID</small>		+ + DW Pb Turb Check	LOGGED BY: _____
CONTACT PERSON Glen Grissom	SAMPLER'S SIGNATURE <i>[Signature]</i>				CLIENT: <u>SCI Engineering</u>
					PROJECT: <u>Drinking Water Lead</u>
					PROJ. MGR.: <u>Chenise Lambert-Sykes</u>
					CUSTODY SEAL #: _____

2 SAMPLE DESCRIPTION (UNIQUE DESCRIPTION AS IT WILL APPEAR ON THE ANALYTICAL REPORT)	DATE COLLECTED	TIME COLLECTED	SAMPLE TYPE		MATRIX TYPE	BOTTLE COUNT	PRES CODE CLIENT PROVIDED	DW Pb	Turb Check	REMARKS
			GRAB	COMP						
SJ-23	12-22-23	2220	X		DW	1	6	X	X	
SJ-24		2224						X	X	
SJ-25		2226						X	X	
SJ-26		2227						X	X	
SJ-27		2229						X	X	
SJ-28		2230						X	X	
								X	X	
								X	X	
								X	X	
								X	X	
								X	X	
								X	X	

CHEMICAL PRESERVATION CODES: 1 - HCL 2 - H2SO4 3 - HNO3 4 - NAOH 5 - NA2S2O3 6 - UNPRESERVED 7 - OTHER

5 TURNAROUND TIME REQUESTED (PLEASE CIRCLE) (NORMAL) RUSH	DATE RESULTS NEEDED	6 I understand that by initialing this box I give the lab permission to proceed with analysis, even though it may not meet all sample conformance requirements as defined in the receiving facility's Sample Acceptance Policy and the data will be qualified. Qualified data may NOT be acceptable to report to all regulatory authorities.
RUSH RESULTS VIA (PLEASE CIRCLE) EMAIL PHONE		PROCEED WITH ANALYSIS AND QUALIFY RESULTS: (INITIALS) _____
EMAIL IF DIFFERENT FROM ABOVE: _____ PHONE # IF DIFFERENT FROM ABOVE: _____		

7 RELINQUISHED BY: (SIGNATURE) <i>[Signature]</i>	DATE 12-29-23	RECEIVED BY: (SIGNATURE) <i>[Signature]</i>	DATE 12/29/23	8 COMMENTS: (FOR LAB USE ONLY)
	TIME 1500		TIME 1640	
RELINQUISHED BY: (SIGNATURE) <i>[Signature]</i>	DATE 1/2/24	RECEIVED BY: (SIGNATURE) <i>[Signature]</i>	DATE 1-2-24	SAMPLE TEMPERATURE UPON RECEIPT IR 5 22.4 °C
	TIME 0805		TIME 1020	CHILL PROCESS STARTED PRIOR TO RECEIPT Y OR N
RELINQUISHED BY: (SIGNATURE) <i>[Signature]</i>	DATE 1-2-24	RECEIVED BY: (SIGNATURE) <i>[Signature]</i>	DATE 1/2/24	SAMPLE(S) RECEIVED ON ICE Y OR N
	TIME 1535		TIME 1535	SAMPLE ACCEPTANCE NONCONFORMANT REPORT IS NEEDED Y OR N
				DATE AND TIME TAKEN FROM SAMPLE BOTTLE